

VAN[®]



MADE FOR SAILORS

A Vaan is made for sailors. For the sensation of the water and the wind. It's meant to excite and explore. With twin aft helm stations, good upwind performance, a lower boom, this cat is made for sailors.





ARRIVE IN STYLE

With its minimalist styling and smart design solutions, a Vaan is both alluring and ergonomical. Easy to handle and robust. The warm, natural interior creates a light and balanced atmosphere. A perfect place to enjoy a good time, and arrive in style.

The image shows the interior of a modern yacht saloon at night. The space is illuminated by warm, recessed ceiling lights. On the left, there is a white L-shaped sofa with a wooden table in front of it, holding a glass of red wine and a magazine. A small television is mounted on the wall, displaying a scene from the TV show 'Undercover'. The right side of the image shows a kitchen area with white cabinetry and a countertop. Large wrap-around windows provide a view of the dark sea and distant lights. The floor is made of light-colored wood planks.

HOME AWAY FROM HOME

In the evening, when lights are dimming, the saloon provides a spectacular view of the surroundings. The wrap-around windows give a great sense of freedom and transparency, with all the coziness you want from a home.

The image shows a modern bedroom interior. A large bed with white linens and two patterned pillows is the central focus. The headboard is a dark wood panel with a warm, glowing light strip running along its top edge. Above the bed, a rectangular digital art piece displays a night scene of a bridge over water. To the right, another digital art piece is mounted on the wall, showing a cityscape at night. The room is dimly lit, with the primary light sources being the light strip and the two digital art pieces, which also function as lamps. The walls are a light, neutral color, and the ceiling has a recessed circular light fixture.

BEDROOM WITH A VIEW

The aft owners bedroom has a comfortable full size bed that has beautiful wide views to the side, rear and top. Plenty of storage on the side of the bed and closet space for first essentials. A warm and private space where you can just drift away.

THAT WALK-IN FEELING

A Vaan is all about space, and no place makes that more clear than the walk-in closet in both hulls.

The tall closet space on the right hold enough cloths to spend months away from home, and buy some new ones along the way. The optional dresser on the left gives you extra drawers for your accessories.



A TRUE BATHROOM

The forward cabin in the owners hull holds a superior bathroom with a spacious shower. The mirror slides sideways to open a cabinet and three large drawers and shelves give you all the storage you need.



A sailboat with a blue sail is sailing on the ocean. The sail has the word 'VAAN' written on it. The boat is leaving a white wake behind it. The sky is clear and blue.

OUR MISSION: SAIL THE PLANET

We believe that living a luxury life and protecting the earth can, and should, go hand in hand. This is why we make exciting luxury sailing yachts that do not harm the planet.

#SAILTHEPLANET



RECYCLED ALUMINIUM

The design of every Vaan is based on circular principles from the start. It is mostly made of recyclable materials and it is almost completely recyclable itself.

The hull is made of more than 60% recycled aluminium like old window frames, traffic signs and license

plates. Some parts contain even more than 85% reused materials.

Aluminium also has an excellent track record for its strength and safety. It makes the hull very rigid, which means no 'cracking' noises inside. And of course it has a great look.

CIRCULAR MATERIALS

We are committed to use only the best, sustainable materials. The hull is made of recycled aluminium and for the interior the finest sustainable materials are used: lyocell as an alternative for silk, a plant-based alternative for leather made of pineapple leaves, cork decking, linen, and FSC certified wood. This makes a Vaan not only 'circular', it also creates a warm, cosy atmosphere. As it turns out, the 'fair' material is usually also the most refined.

#ITSONLYNATURAL #CIRCULARMATERIALS #SUSTAINABLELUXURY
#SAILING #RECYCLEDALUMINIUM #ALLELECTRIC #SOLARENERGY
#BIOBASED #LOWIMPACT #TOGETHER #SAILTHEPLANET

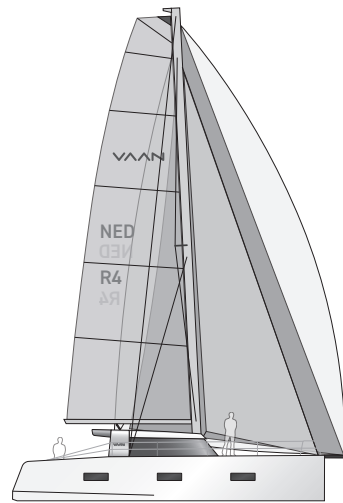
ALL ELECTRIC

Fitting our 'Sail The Planet' mission, a Vaan is all-electric, from induction cooking to electric propulsion. The large or extra large battery banks are charged from the solar panels, the hydro-generating motors, or the wind. A back-up generator can be added to the energy mix to provide extra assurance on longer journeys.

Not only is all-electric more sustainable, it also saves space and eliminates smells, noises and vibrations.

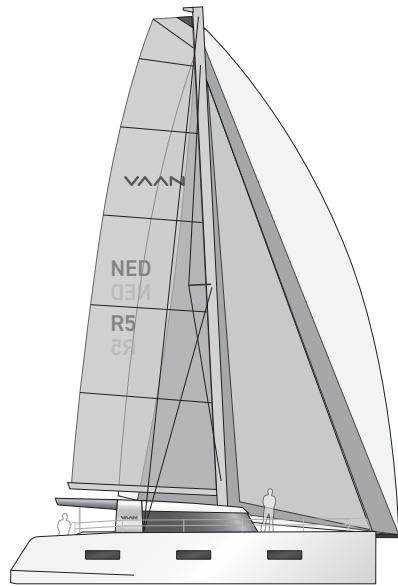


THE VAAN RANGE



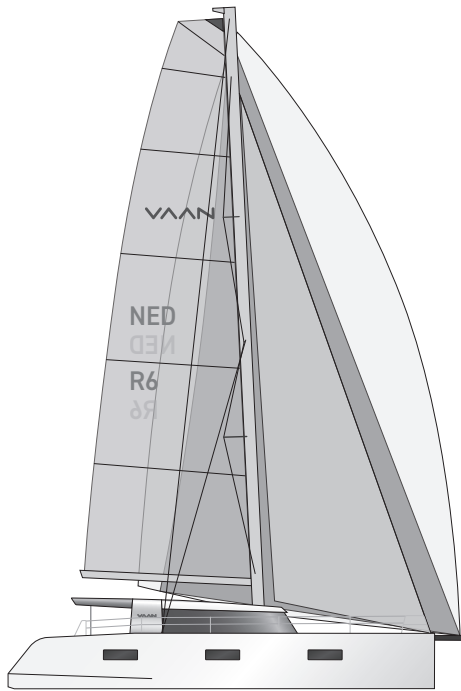
R4

LOA: 42ft/12.80m
BEAM : 7.06m



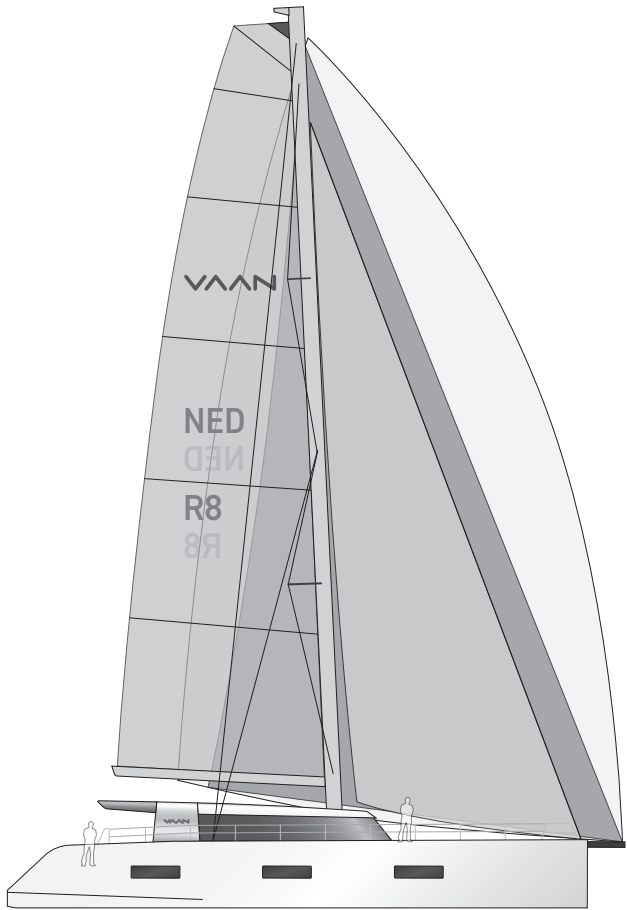
R5

LOA: 49ft/14.95m
BEAM : 7.99m



R6

LOA: 58ft/17.68m
BEAM : 9.03m



R8

LOA: 78ft/23.80m
BEAM : 11.00m



VT2250

SOMAC107278
Q180356_BN45

A large catamaran with a white hull and black sails is sailing on a blue sea under a clear sky. The boat is viewed from a side-on perspective, showing its wide beam and the large cockpit area. Two people are visible on the deck. The text 'THE ULTIMATE DECK SALOON' is overlaid on the right side of the image.

THE ULTIMATE DECK SALOON

The R4 is designed for sailors who are looking for more space than a monohull offers. The cockpit and saloon are at the same level, and there is very little heeling.

Your friends and family can enjoy all the comfort and luxury, while you are at the helm enjoying their company.

R4



THE RIGHT HELM POSITION

As a helmsman you want to be at the back of the cockpit. The large, open transom of the R4 connects you to the water that rushes underneath.

It gives you a spectacular sailing sensation. Much like a monohull but without the heeling, and faster. And because of the dual helm positions, you can always be sheltered and safe from the elements.



CAT CABRIOLET

Unlike most cats, the Vaan R4 does not have a large, fixed roof all over the cockpit. Instead, we created a bimini that can be installed and removed in a matter of minutes.

People in the cockpit and at the helm can be protected from the sun when desired. But for colder regions, steering in the sun is also possible. It makes the R4 great for going south, as well as for a trip up north.

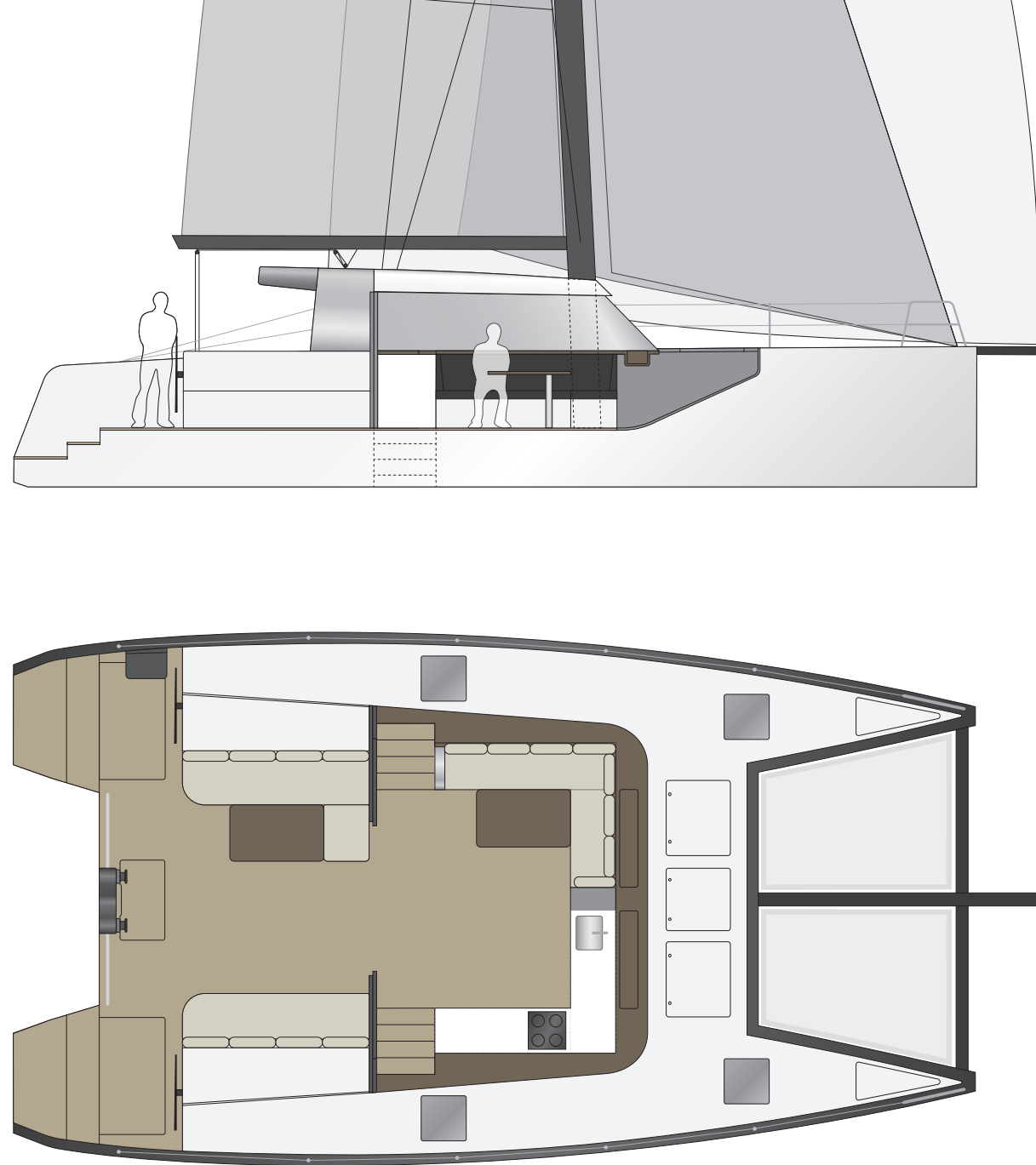


THE SALOON LIVING ROOM

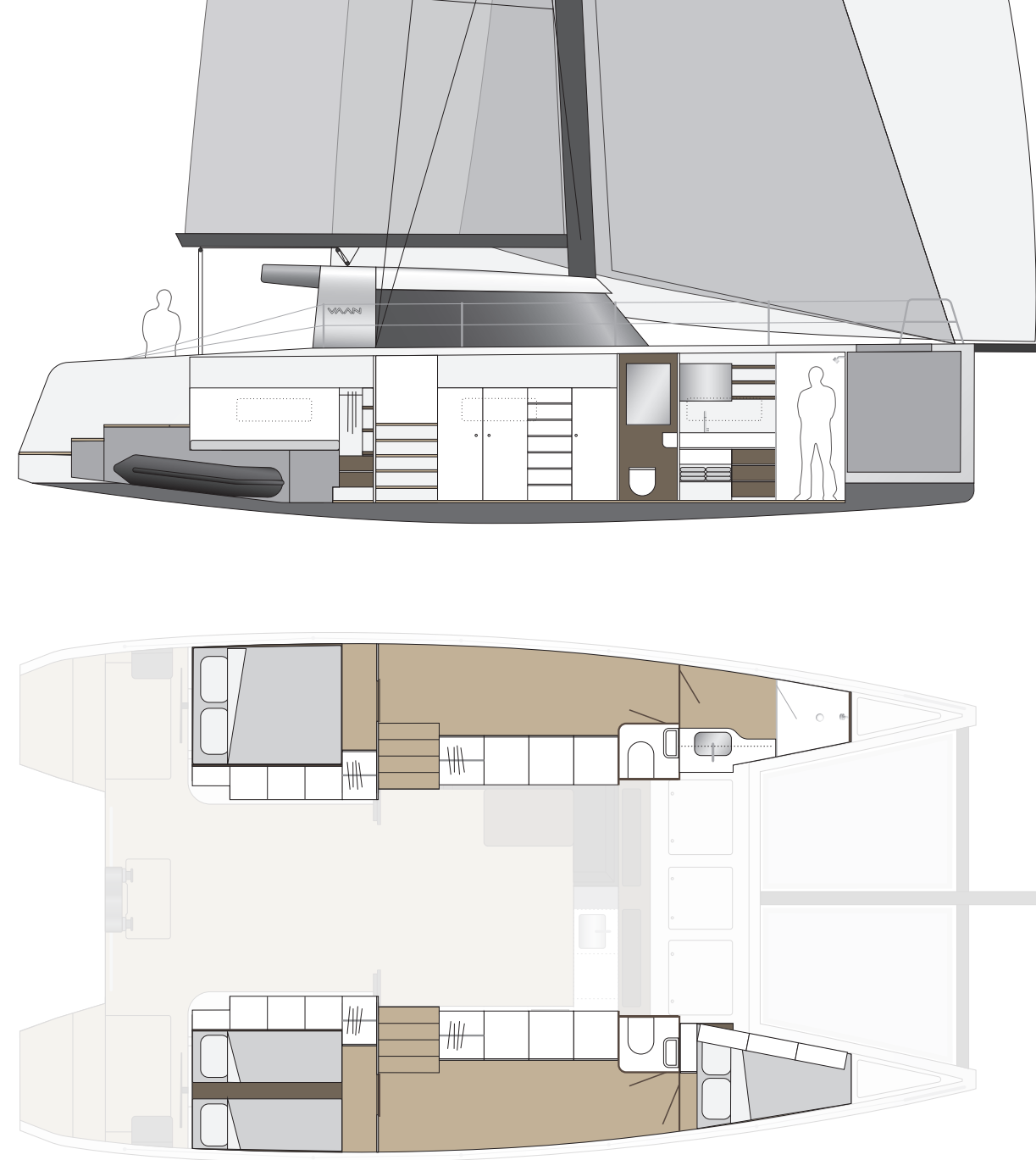
The saloon has a bright, warm and welcoming feel to it. The modern and functional kitchen is light yet solid and offers all the amenities to really enjoy some good cooking.



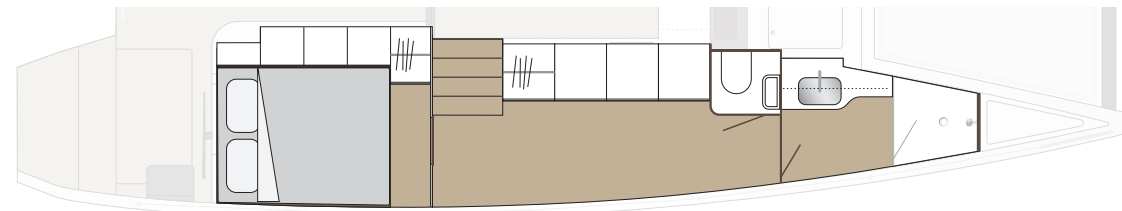
COCKPIT & SALOON



HULLS

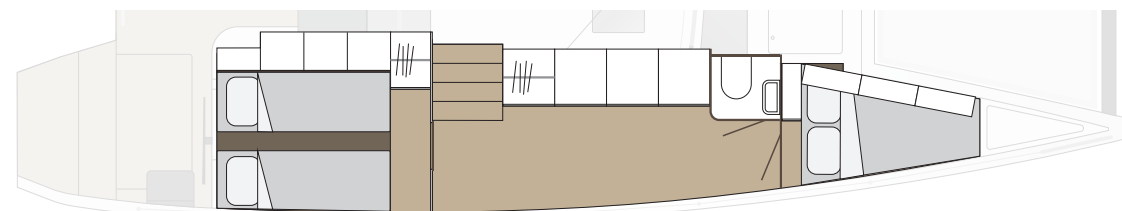


LAY-OUTS



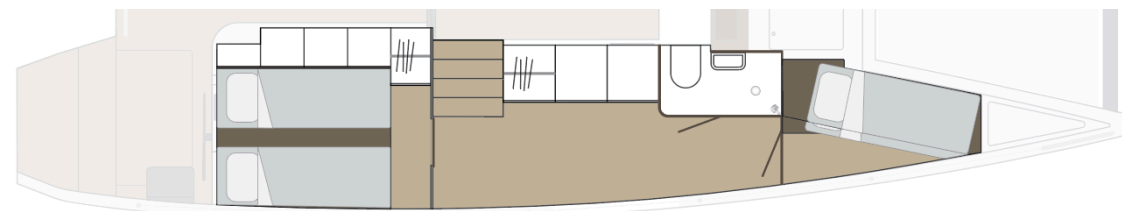
Extra Master Bed

Second Large Bathroom



Sliding Double Bed

Trapezium Bed



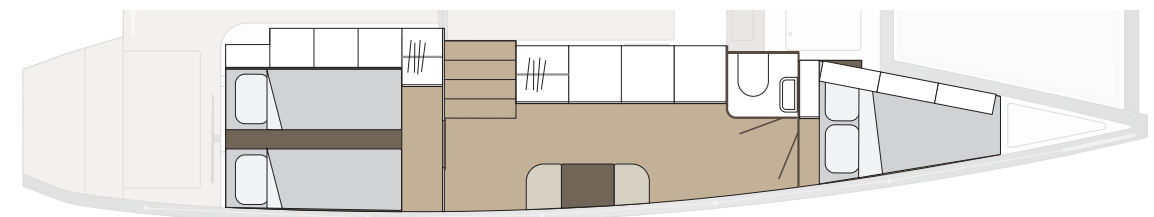
Extra Bathroom

Bunk Beds

OPTIONS



Dresser



Two-Seater Desk

The guest hull offers subtle different options. It features a twin bed that can easily be moved together to form a double bed. It has its own separate toilet and several options for the

front cabin: bunk-beds, trapezium bed and a full-sized second bathroom. It's also possible to add a small two-seater with a desk to do some reading or work.

TORQUEEDO

- 2x FP12 saildrive
- Power: 2x 12kW
(similar to 2x 25Hp combustion)
- Hydro Generation: no
- Power 48-5000 batteries
20 or 40 kWh
- Optional generator: 10kW



OCEANVOLT

- 2x SD15 saildrive
- Power: 2x 15kW
(similar to 2x 30Hp combustion)
- Hydro Generation:
up to 2x 1kW (standard)
up to 2x 2.5kW (servo-prop)
- MG LFP batteries
21 or 42 kWh
- Optional generator: 15kW

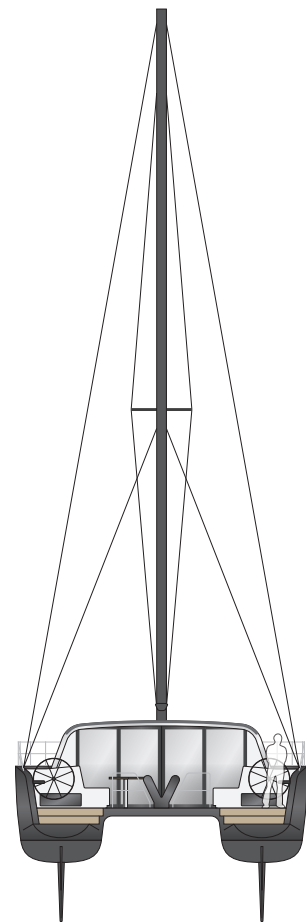


SPECIFICATIONS



- Main : 55 m²
- Jib (ST) : 30 m²
- Gennaker : 135 m²
- Code-0 : 85 m²

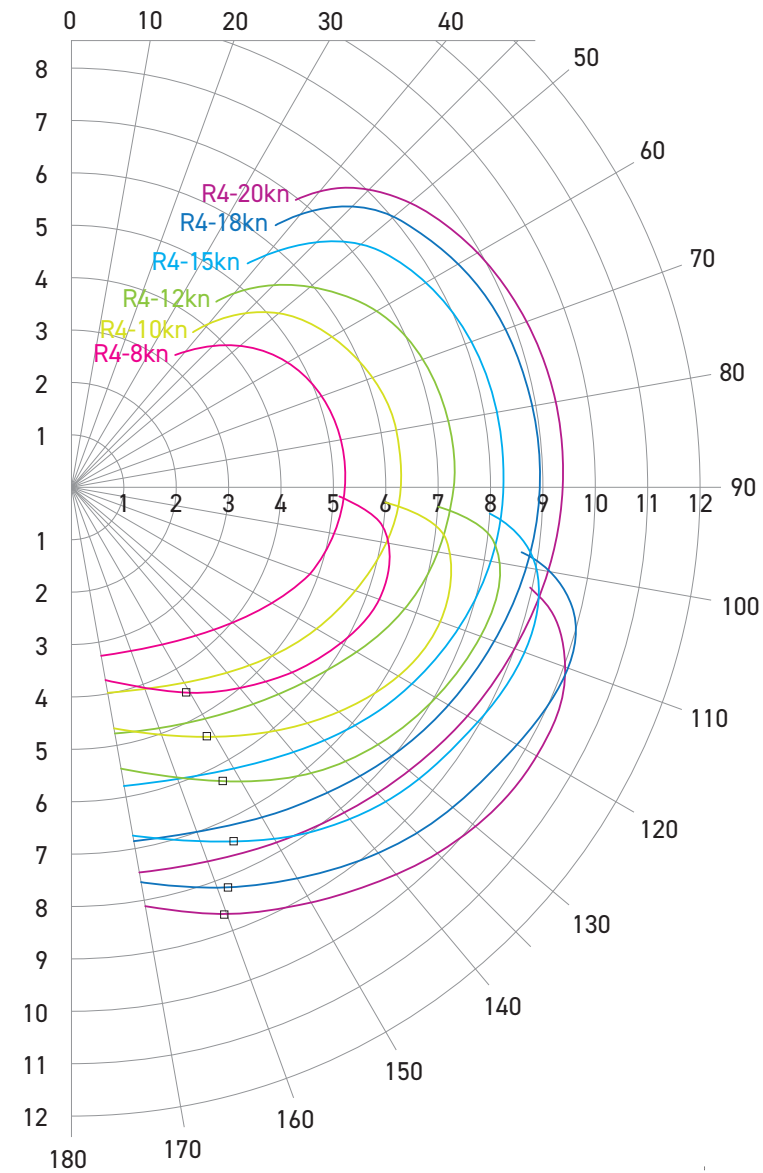
12.80m / 42ft
Displacement: 10,9T



7.06m

19.80m

POLAR DIAGRAM

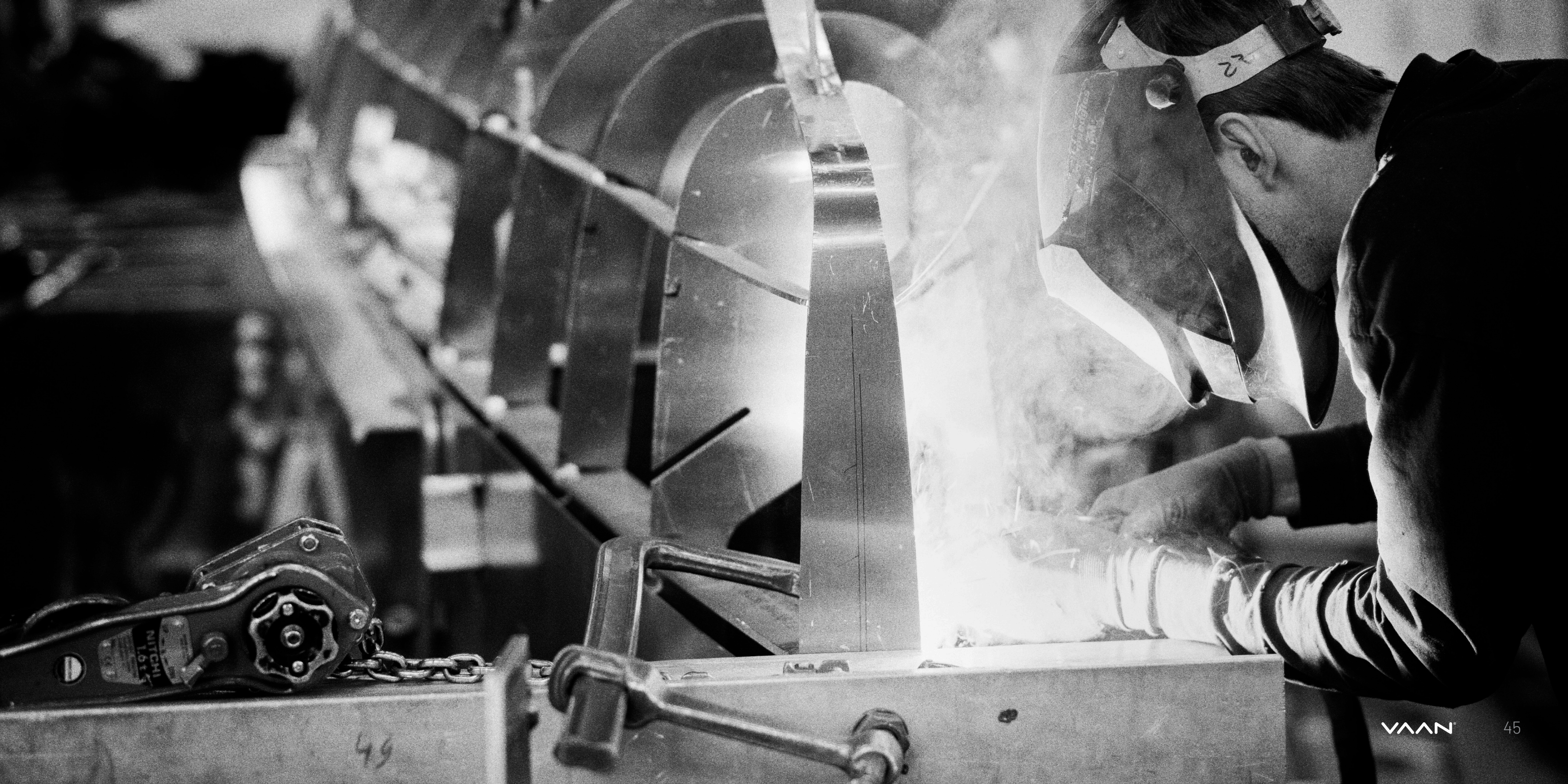


VAAN R4
• Loa: 12.80m (42ft)
• Beam: 7.05m
• Sail area upwind: 85m²
• Sail Area Downwind: 190m²

VPP CALCULATION
• By Dykstra Naval Architects
• Max RM 100kNm

AERO
• Coefficients from Windesign
• No reefs
• Flat internal method
• Windspeed at masthead
• Windangle relative to tack

HYDRO
• CFD calculation
• Calculation run for flat water



GO FURTHER

At 49ft the Vaan R5 really goes the distance. A luxury platform to explore the most distant places and faraway islands. A spacious sailing machine for couples to large families.

And like every Vaan it is made of circular materials and almost entirely recyclable. A true testament to the Vaan mission: Sail the Planet.



R5



LIVE ANYWHERE

The open spaciousness of the R5 transforms this sailing cat into your penthouse on the water. Even with a family of six you can spend a year exploring the planet. And with the Live-Aboard version, indoor comfort is even more grand.

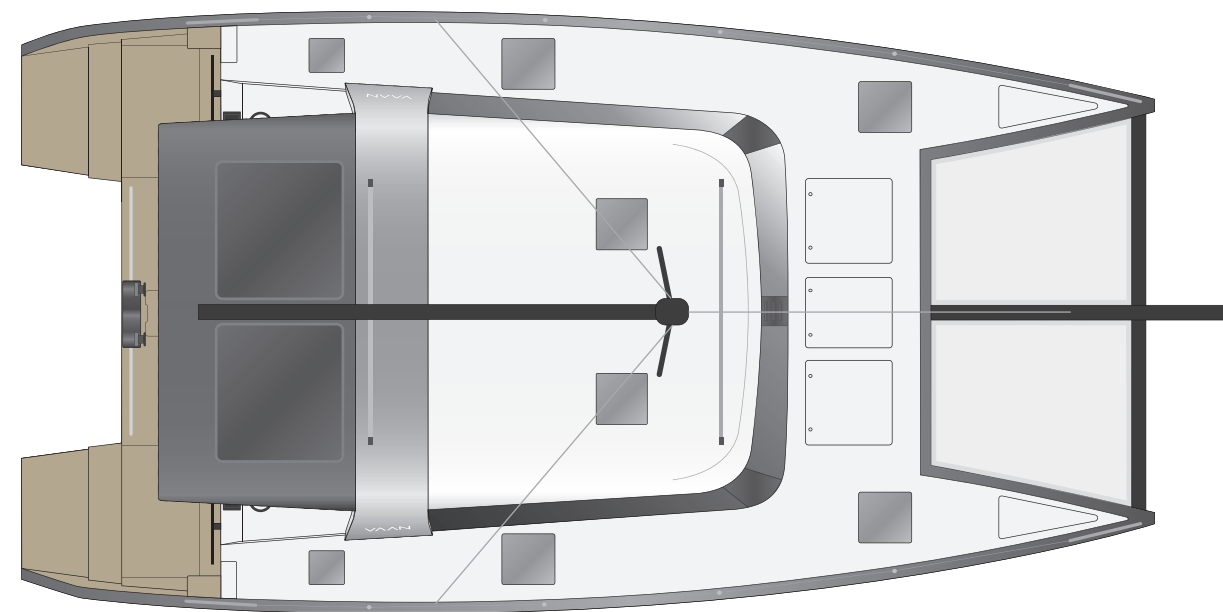


MOVING FORWARD

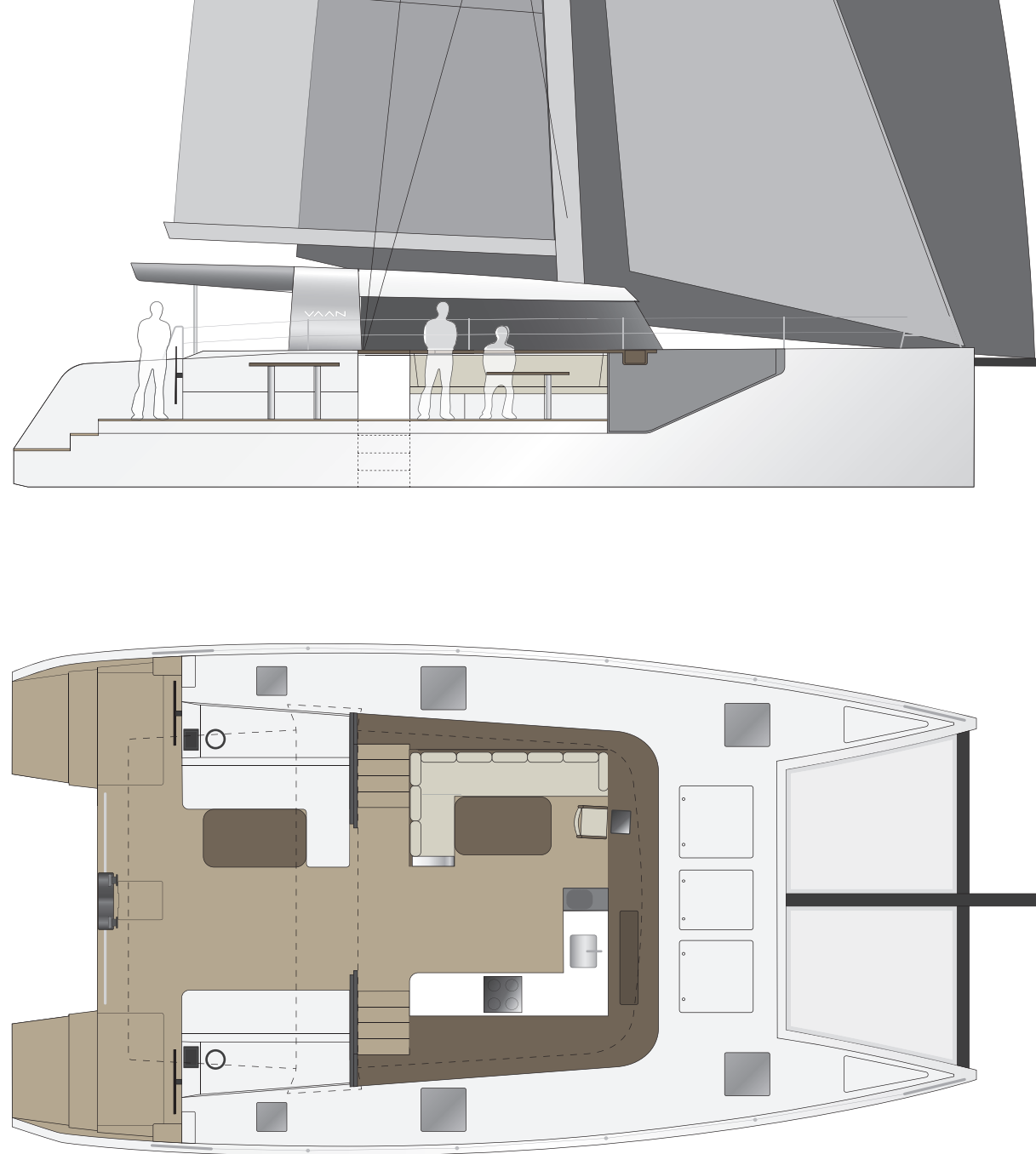
The optional forward seating area offers a nice cooling breeze while at anchor. Or a beautiful sunrise view while you're having your first cup of coffee.

The table can be raised to provide seating for 3-4 people, or lowered to offer a large lounge bed. And why not fill the bottom section with some ocean water for the kids to play in or for you to cool off in? Hello jacuzzi:)

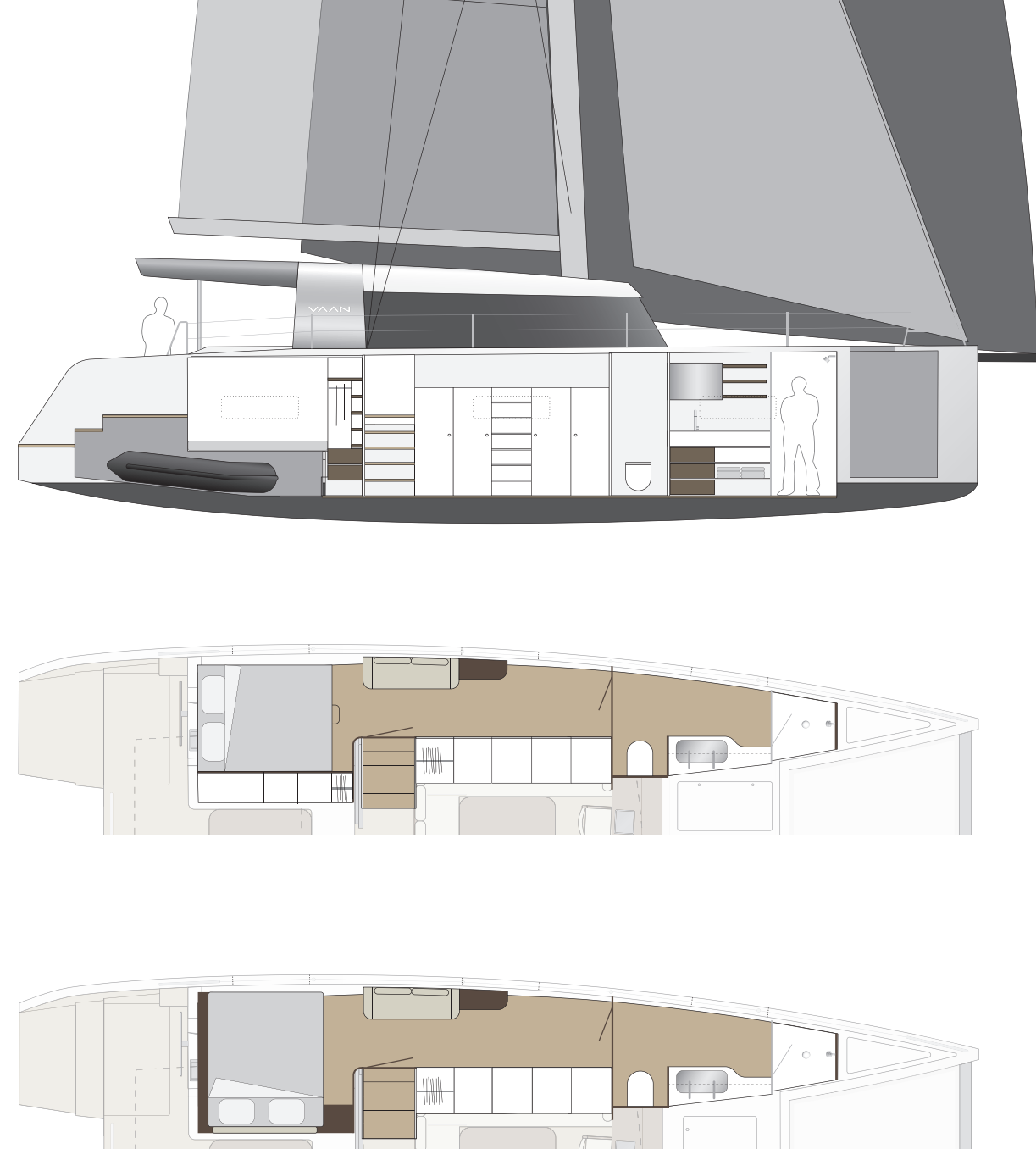
EXTERIOR



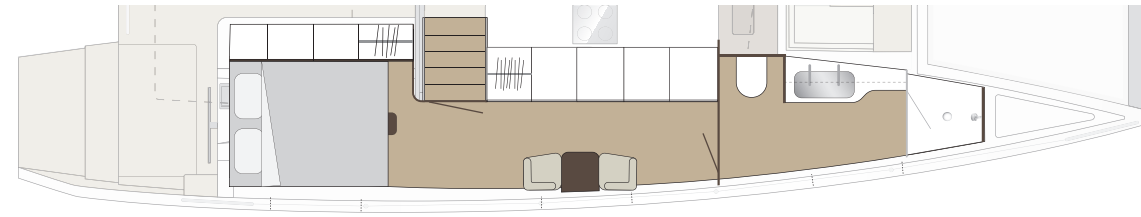
COCKPIT & SALOON



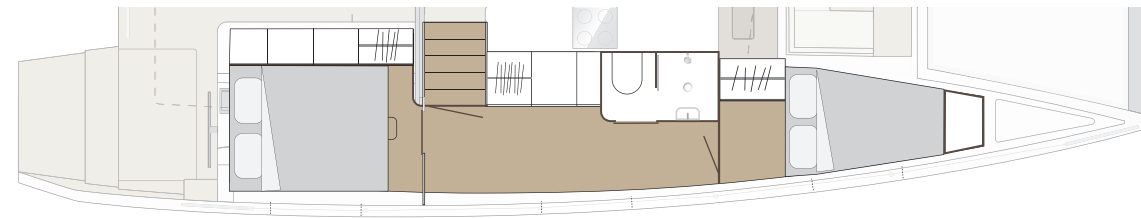
THE OWNERS SUITE



LAY-OUTS



Second master suite with walk-in closet and full bathroom

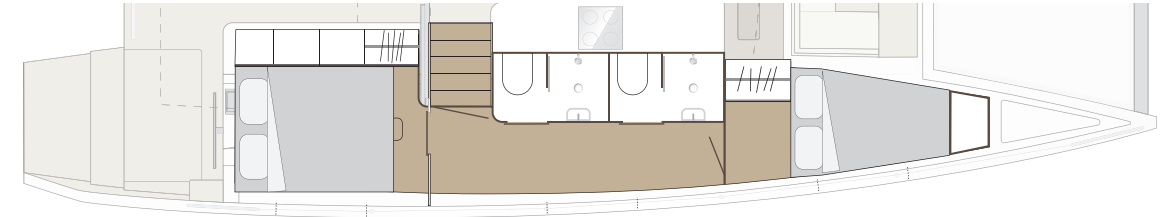


Aft bedroom

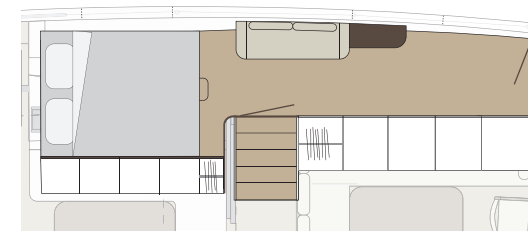
Mid Bathroom

Tripezium Bed

OPTIONS



Double Mid Bathroom



Sofa + Dresser

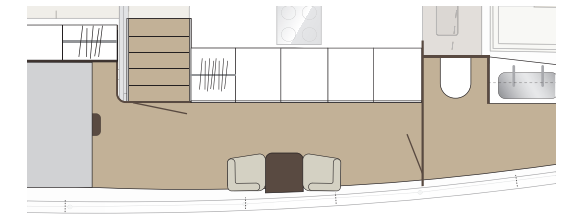


Table with Seats

THE R5 LIVE-ABOARD

With the sliding glass door moved further aft, part of the cockpit becomes part of the interior space creating a saloon area of 30m².

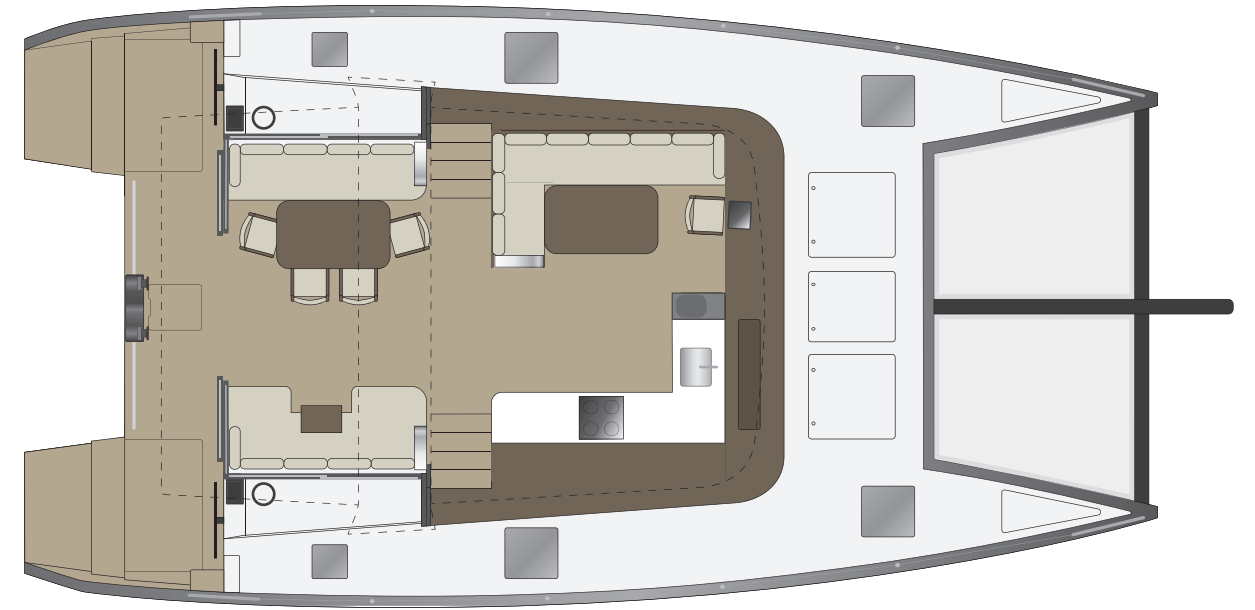
No flapping tents, zippers and view distorting plastic but crystal clear floor-to-ceiling glass all the way around. For different parts of the world or sudden weather changes, the R5 LA offers the best of all worlds.



LIVE-ABOARD VERSION



- Sliding doors moved aft
- 30m² saloon space
- Side windows slide open



LIVING SPACE

The R5 LA saloon offers a grand living space for many uses. Travel around the globe with your family, entertain guests on special voyages, even hold business dinners in the bay. The R5 will take you there.



TORQUEEDO

- 2x Deep Blue saildrive
- Power: 2x 25kW
(similar to 2x 40Hp combustion)
- Hydro Generation: no
- 40-80 kWh batteries
- Optional generator: 15kW

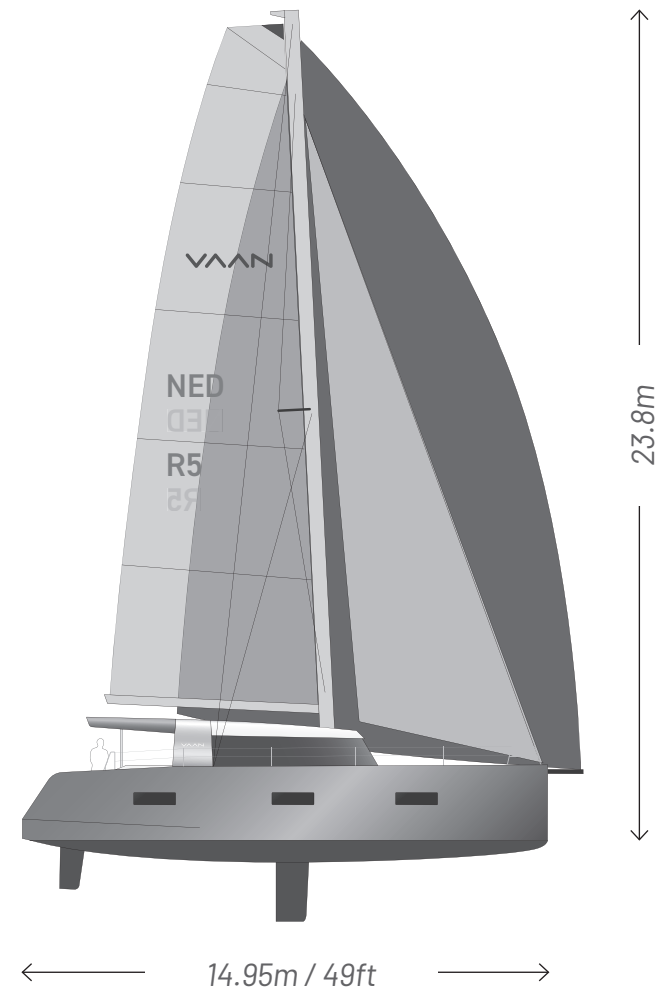


OCEANVOLT

- 2x SD15 saildrive
- Servoprop option
- Power: 2x 15kW
(similar to 2x 30Hp combustion)
- Hydro Generation:
up to 2x 1kW (standard)
up to 2x 2.5kW (servo-prop)
- Valence LiFePO4 batteries
20 or 40 kWh
- Optional generator: 15kW



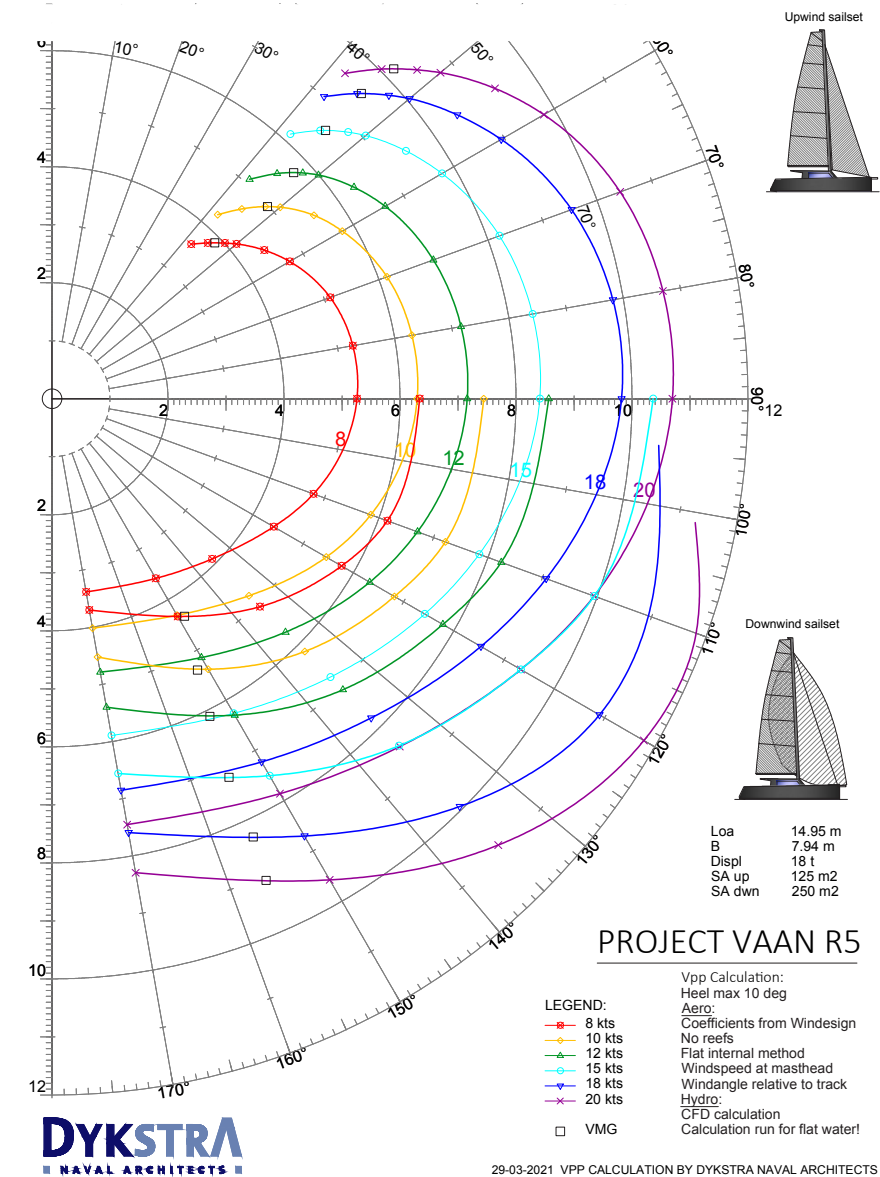
SPECIFICATIONS



SAIL AREAS

- Main : 80 m²
- Jib (ST) : 45 m²
- Gennaker : 170 m²
- Code-0 : 120 m²

POLAR DIAGRAM



PAF20A-2

PAF20A-2

PAF20A-2

400PS-20A> 1.3
-5-

PAF20A-3

PAF20A-3

PAF20A

THE GRAND R6

At 58ft the Vaan R6 is a next step in sustainable luxury sailing. An owners yacht with incredible space, storage and stability. Made from our signature aluminium, with cork decking and electric propulsion the R6 too, is a truly sustainable sailing yacht.



R6



YOUR ONLY FOOTPRINT WILL
BE THE ONE ON THE BEACH

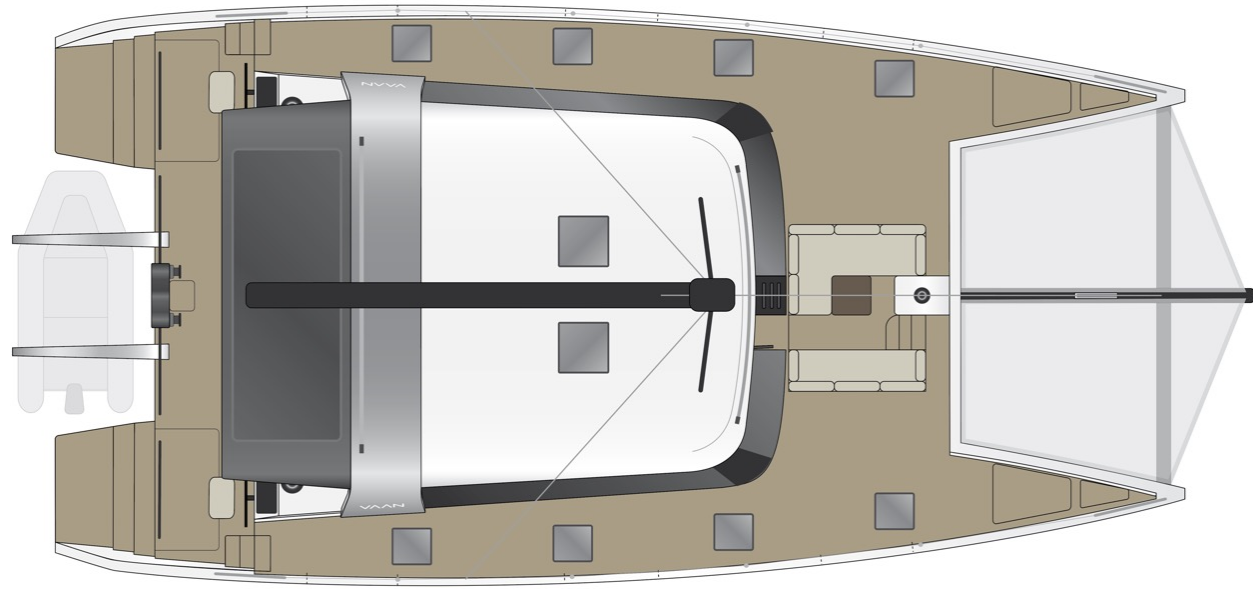


TOGETHER AND CREWED

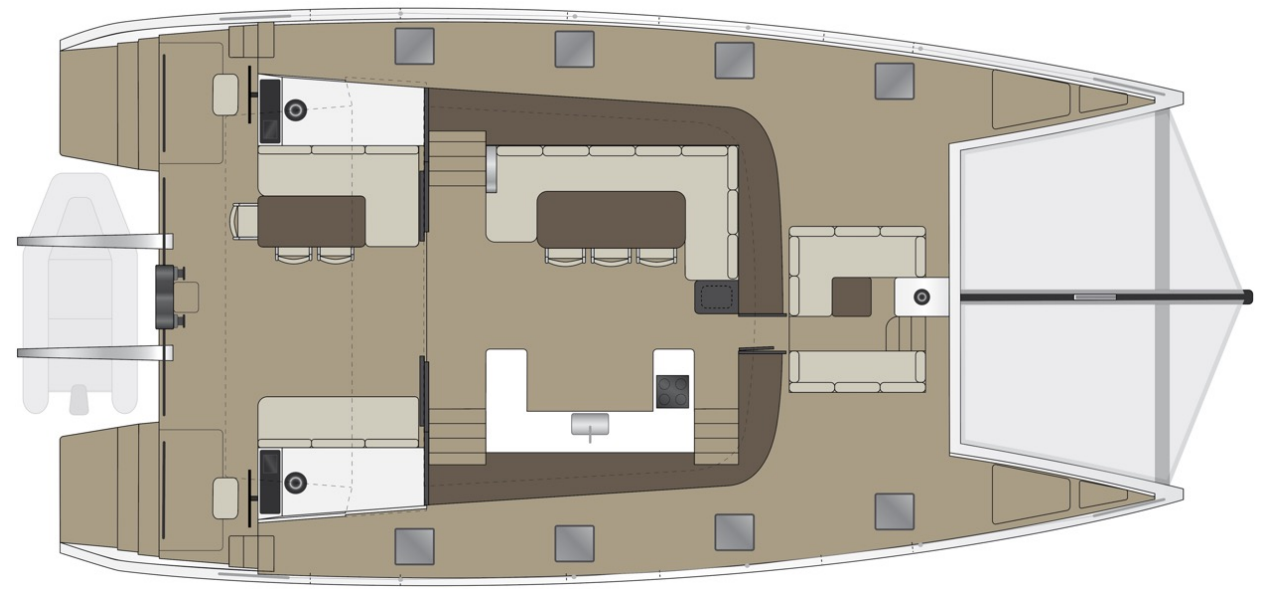
The R6 can easily be sailed by just two people. So you can experience ultimate privacy on your trips. The R6 also offers layouts for crewed voyages with 2 extra beds for the crew providing a maximum of 8+2 berths.



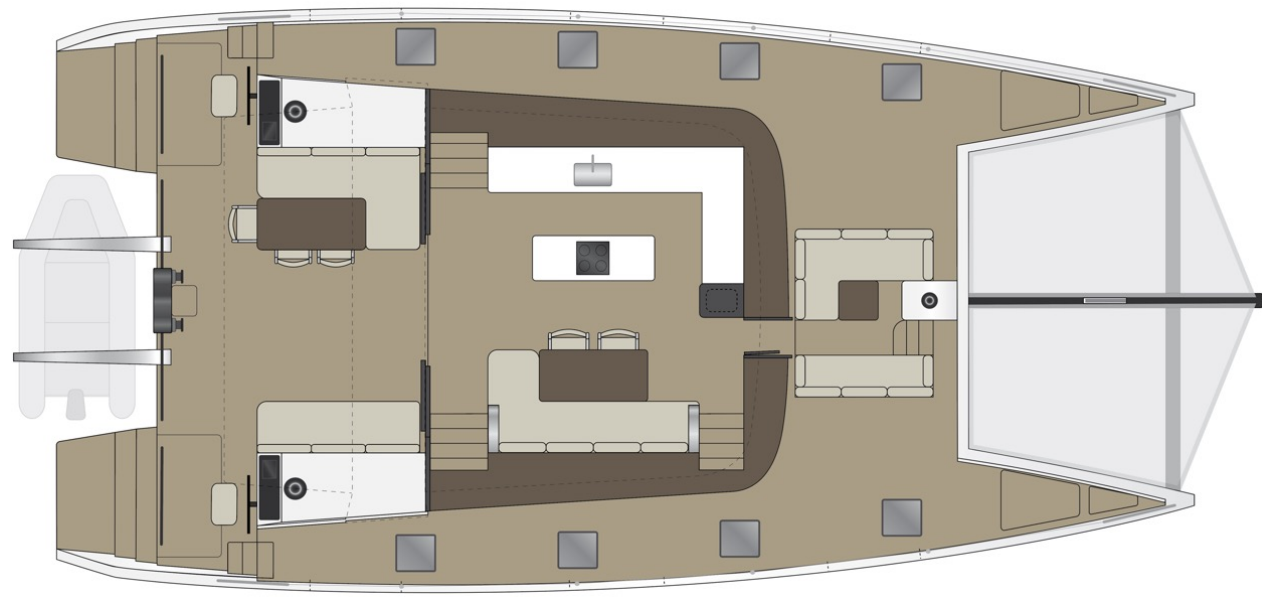
UPPER DECK



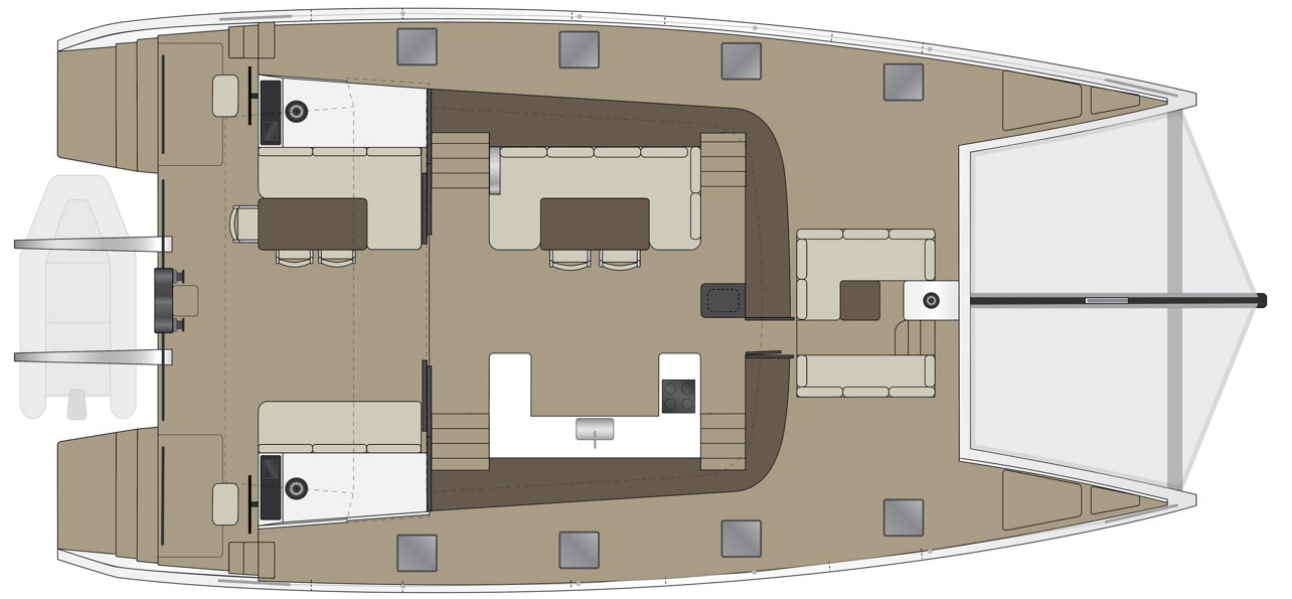
SALOON



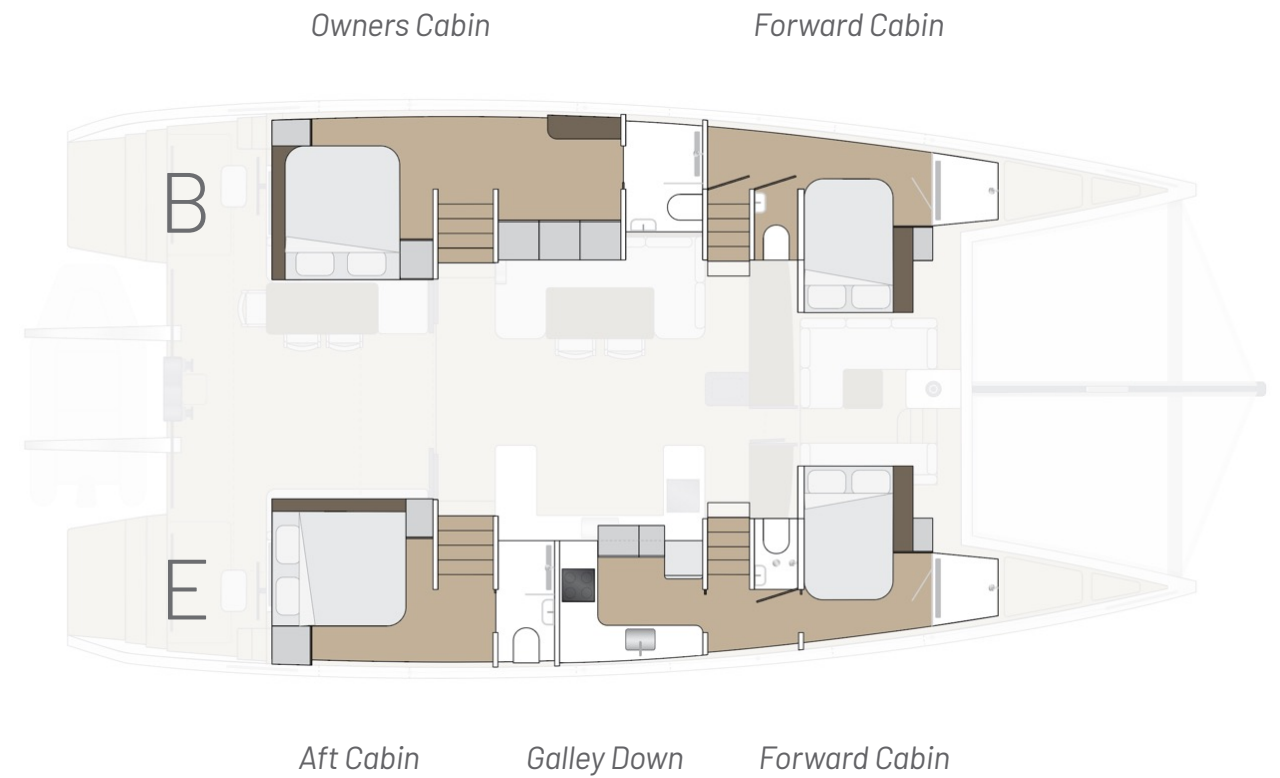
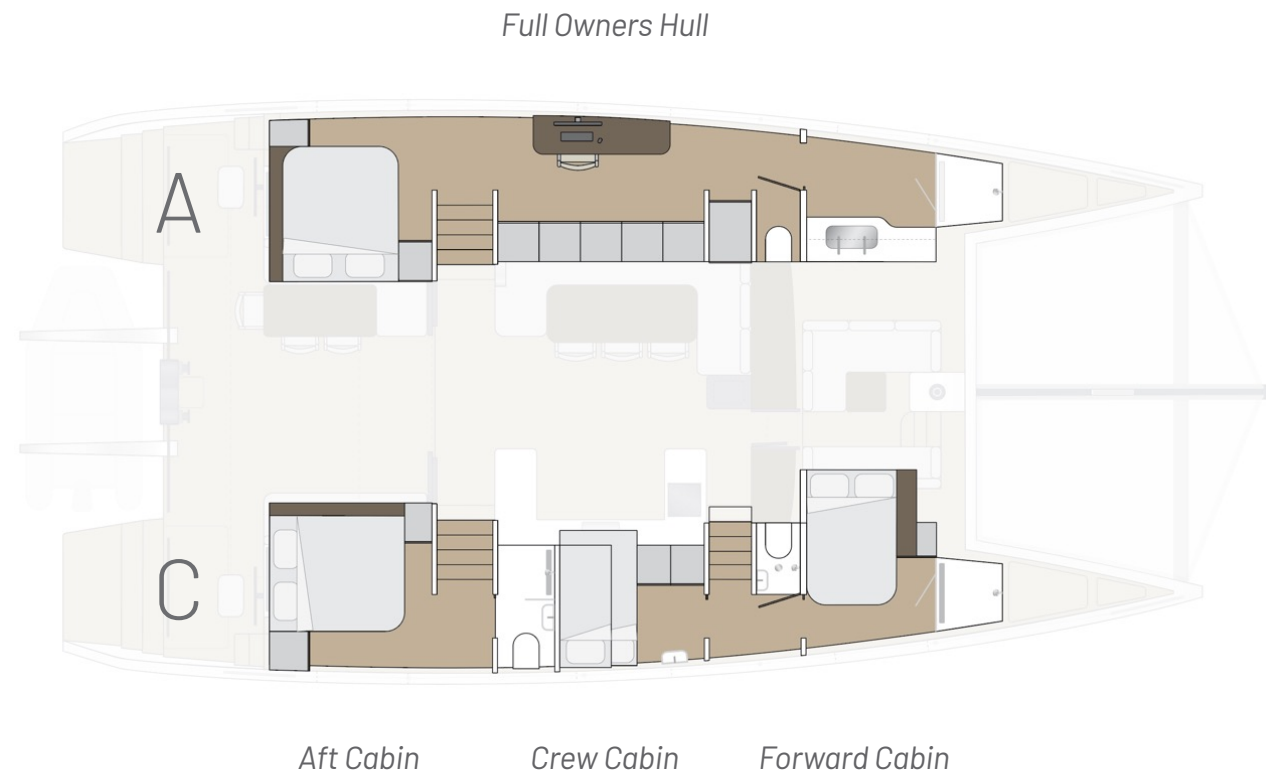
KITCHEN XL



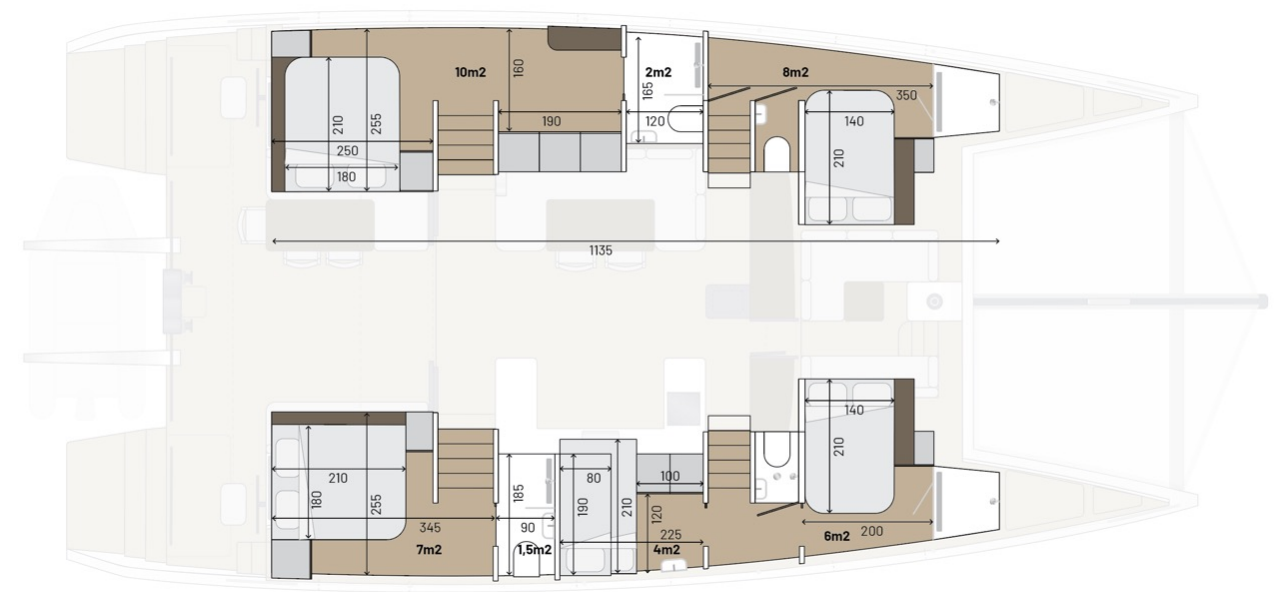
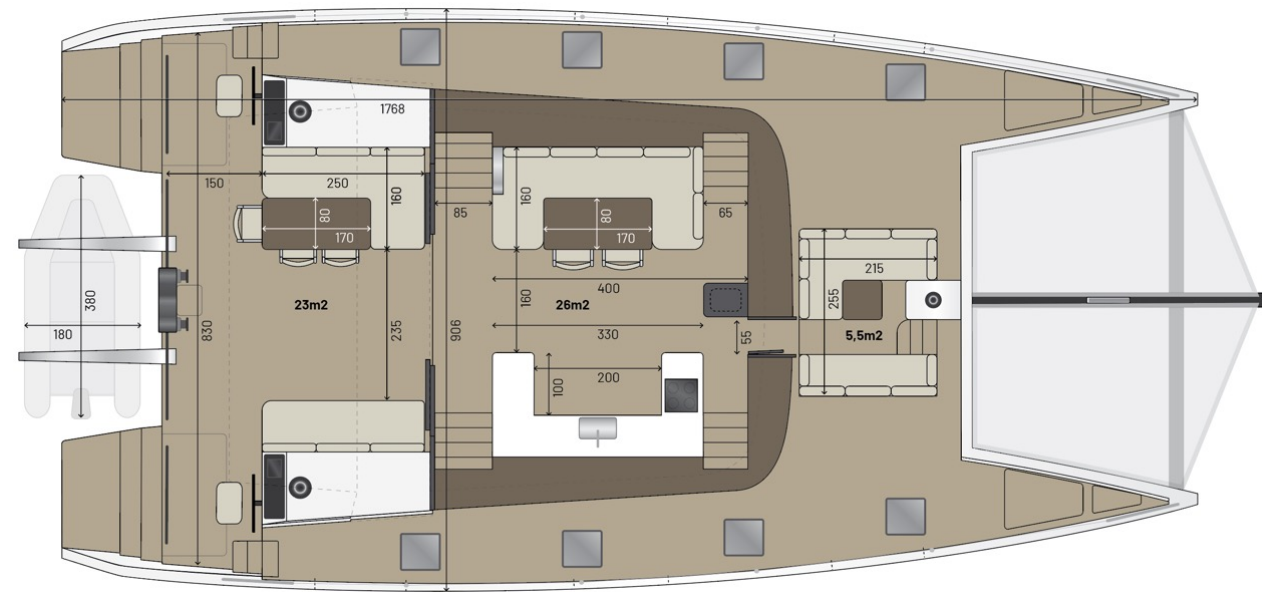
EXTRA PS STAIRS



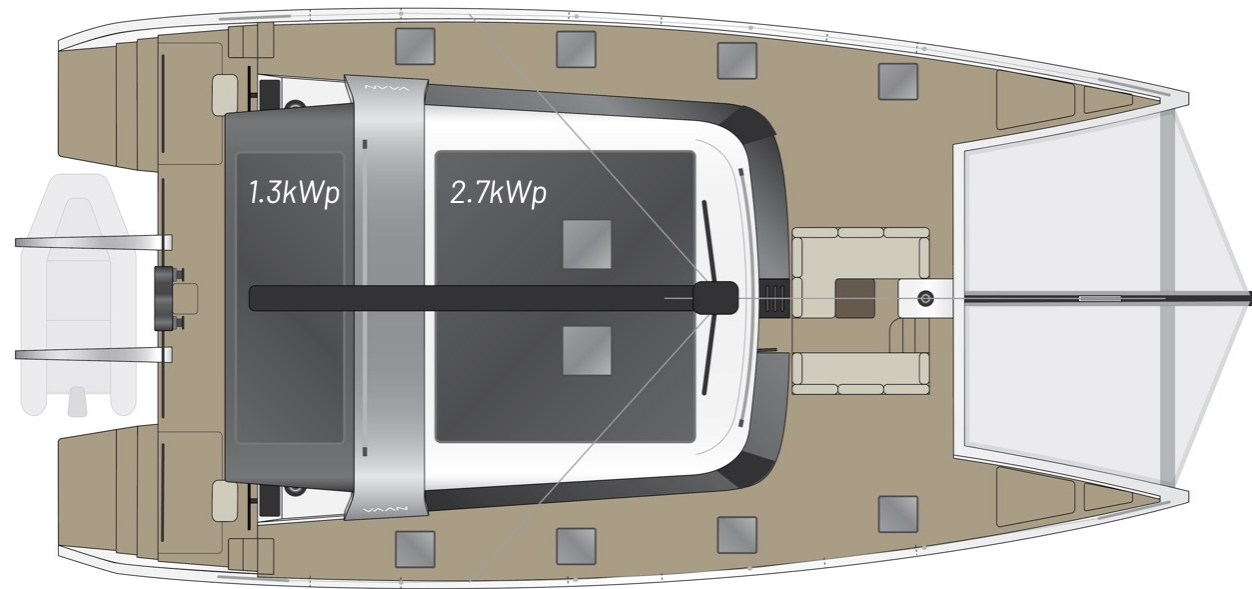
HULL LAY-OUTS



DIMENSIONS



SOLAR



SPECIFICATIONS

MAIN DIMENSIONS

- LOA: 58ft / 17.68m
- BEAM: 9.08m
- MAST: 27.50m
- DISPLACEMENT: 22.5t
- BRIDGE DECK: 95cm

SAIL AREAS

- Main: 110m²
- Jib: 65m²
- Code-0: 150m²
- Gennaker: 200m²

PROPULSION

- 2x OCEAN VOLT HPSP25 saildrive
- Power: 2x 25kW
- Solar 1.3kWp to 4.0 kWp
- Opt. generator: 22kW or 2x11kW

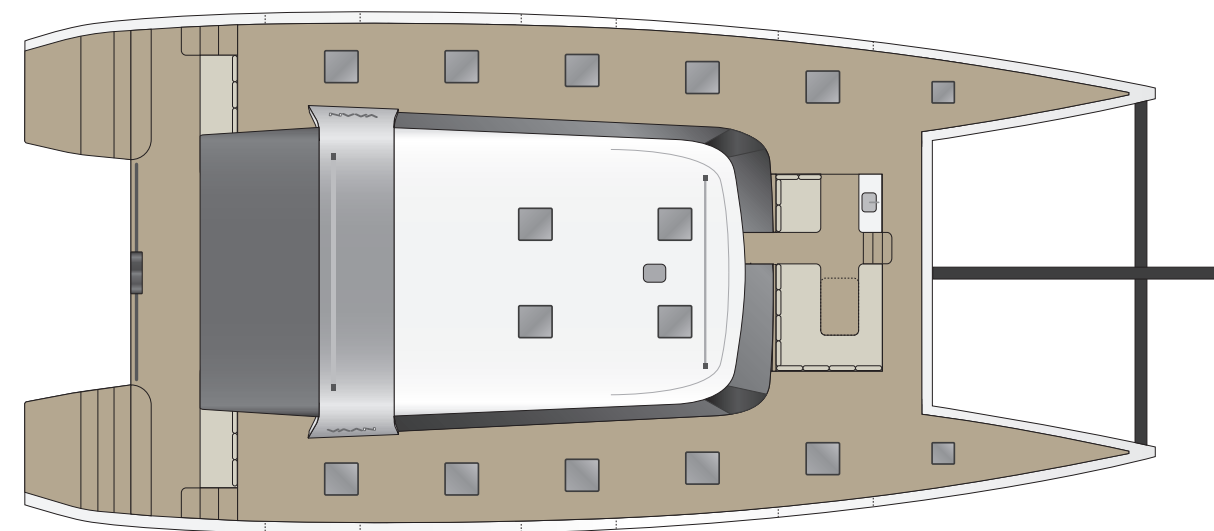
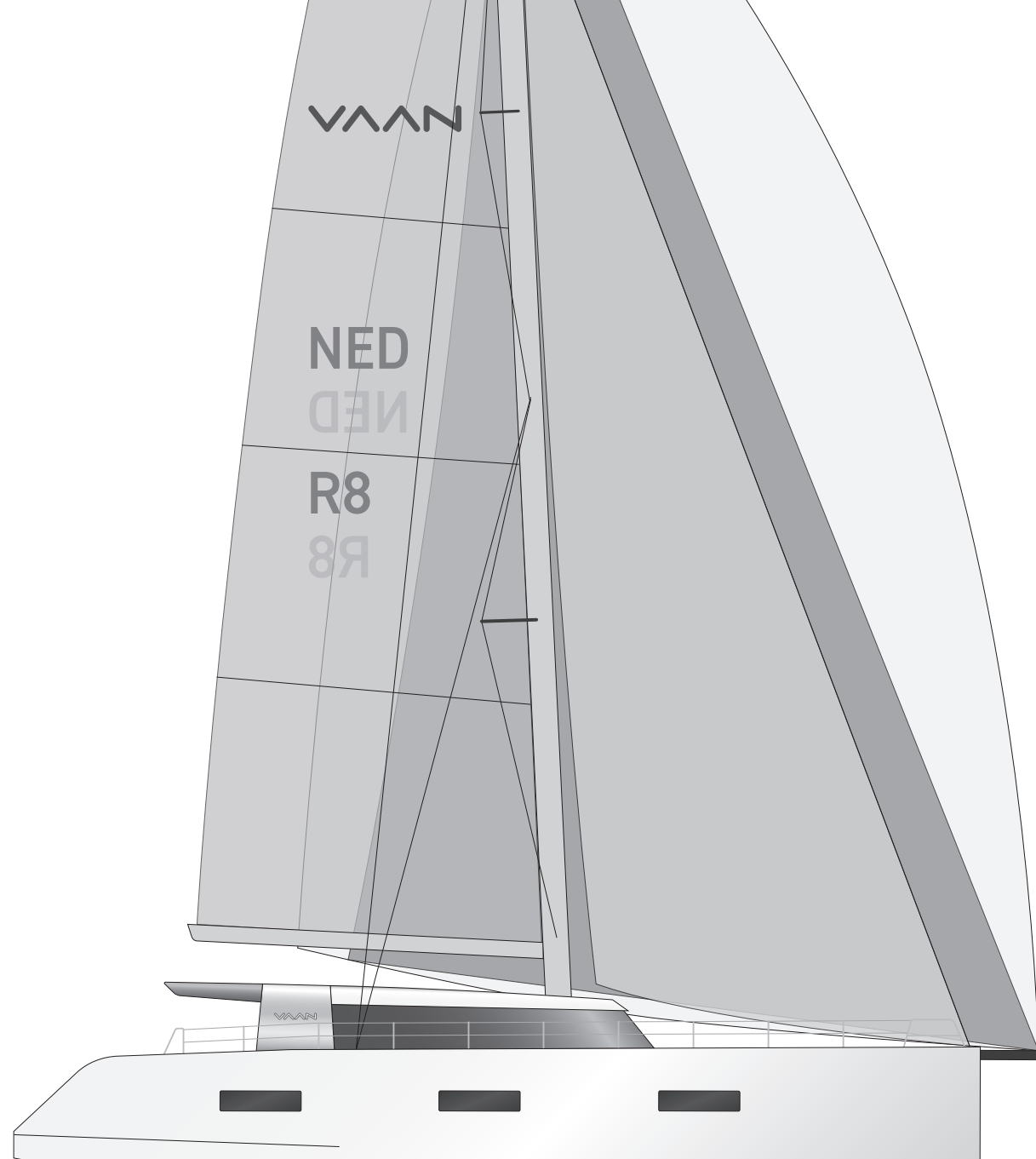


R8

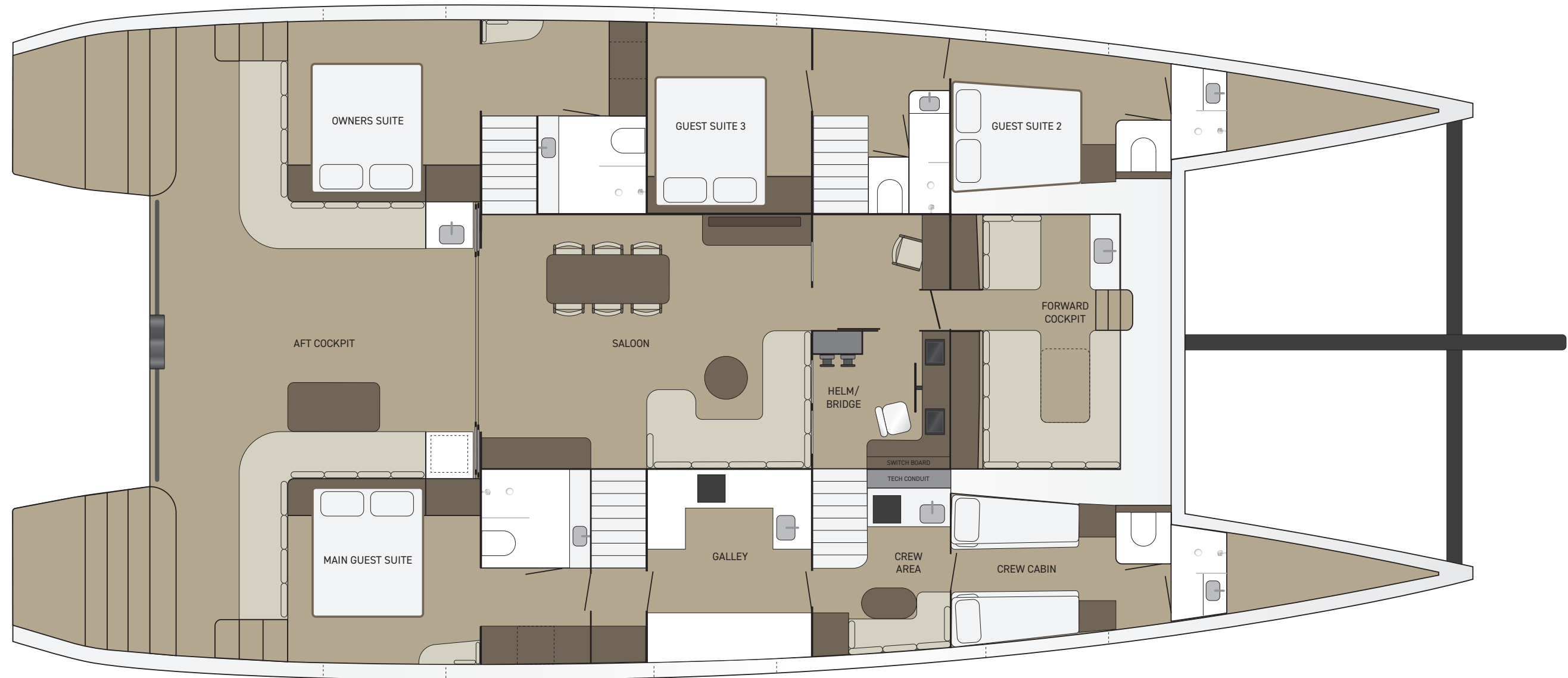
CONCEPT

The plans, specifications, images and other details herein are only indicative and subject to change.



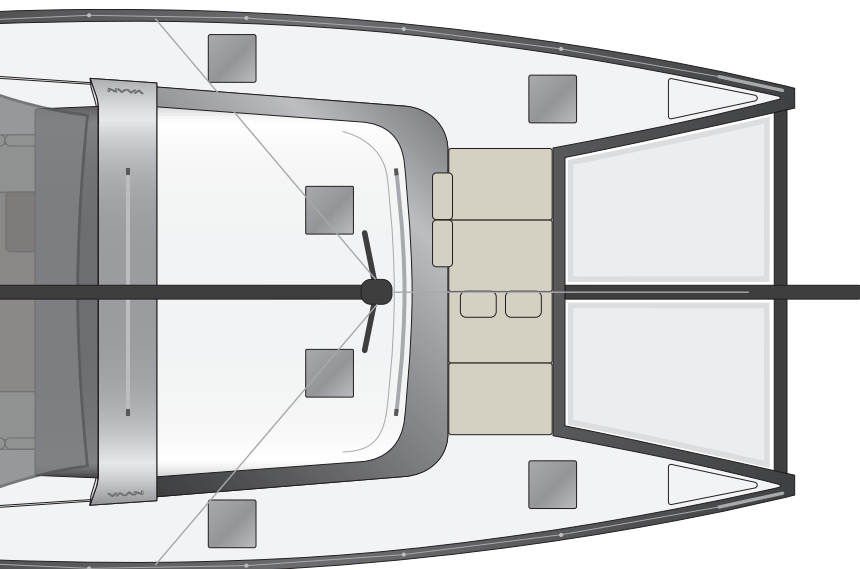
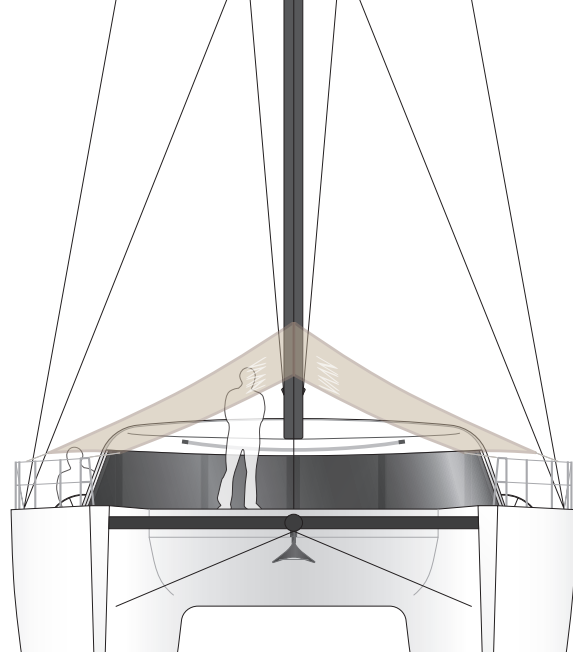


- Length: 78ft / 23.80m
- Beam: 11m



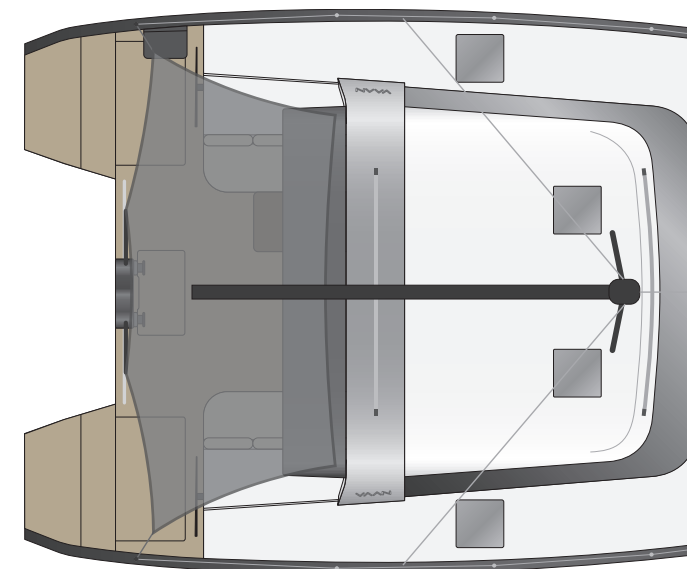
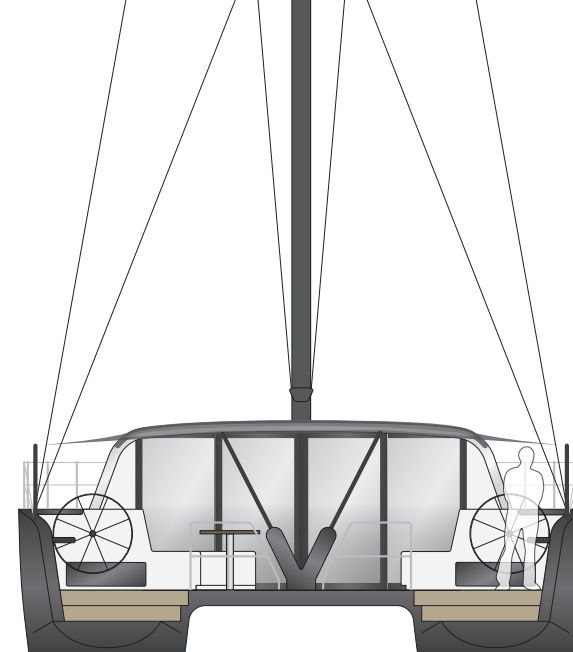


LOUNGE



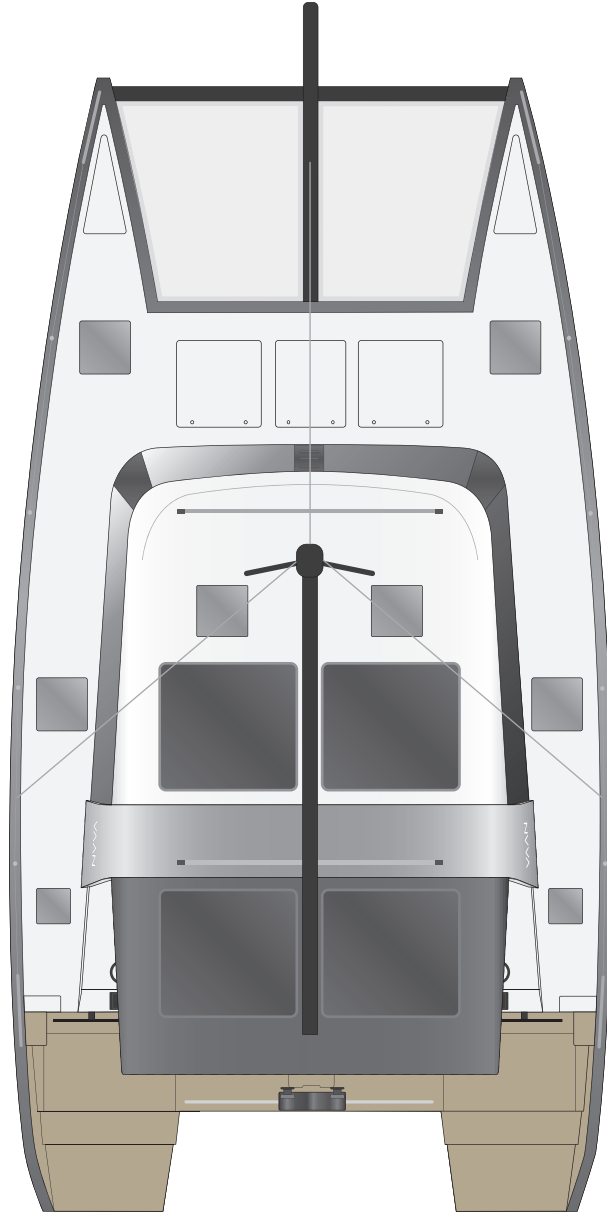
- Large lounge cushions
- (Partially) shaded when desired
- Installed in minutes
- Light-weight

BIMINI



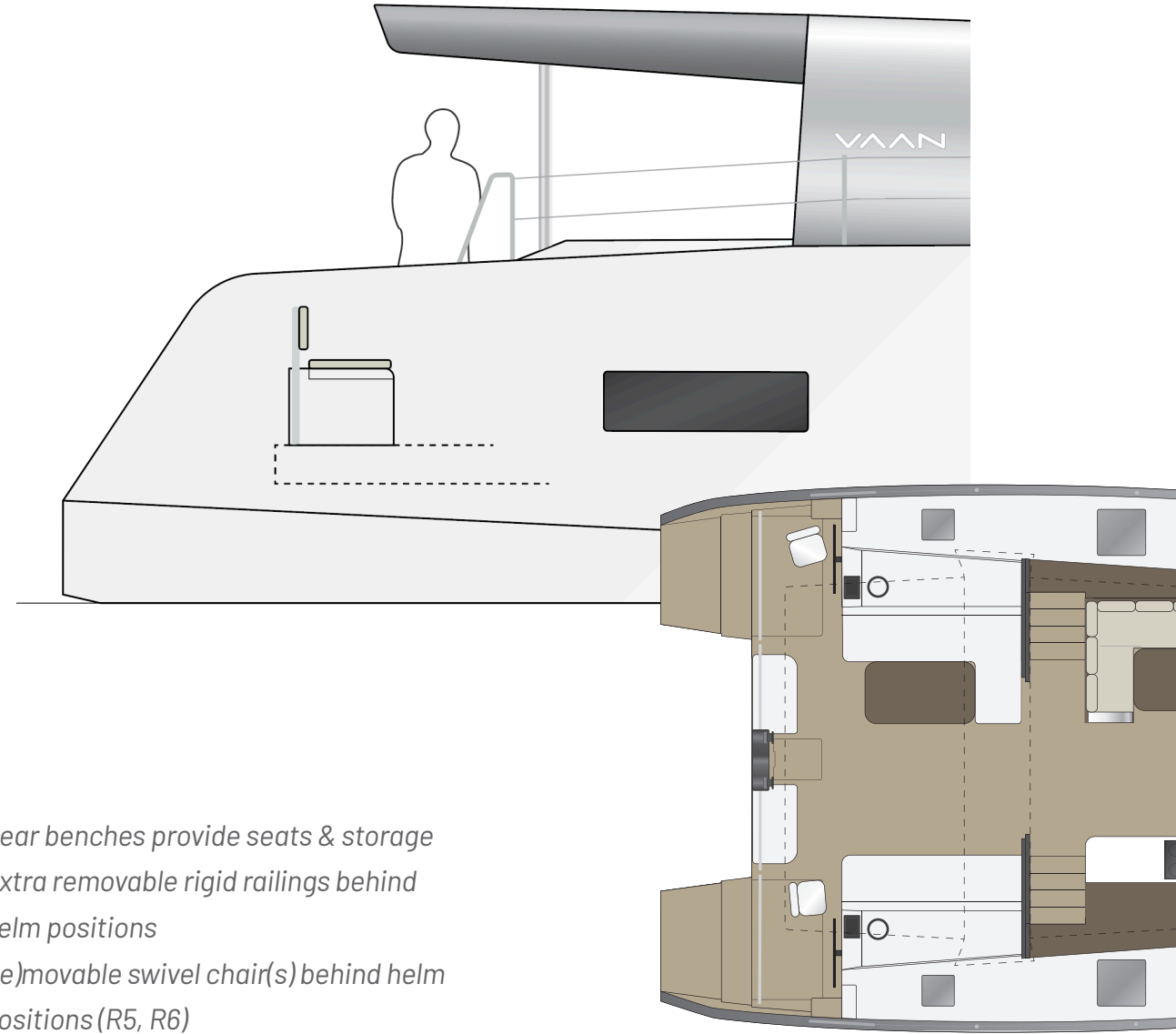
- Covers entire cockpit, including both helm positions
- Installed in minutes
- Light-weight

EXTRA SOLAR

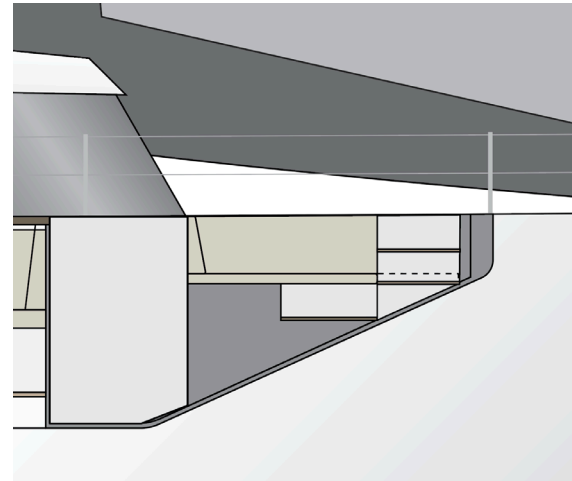
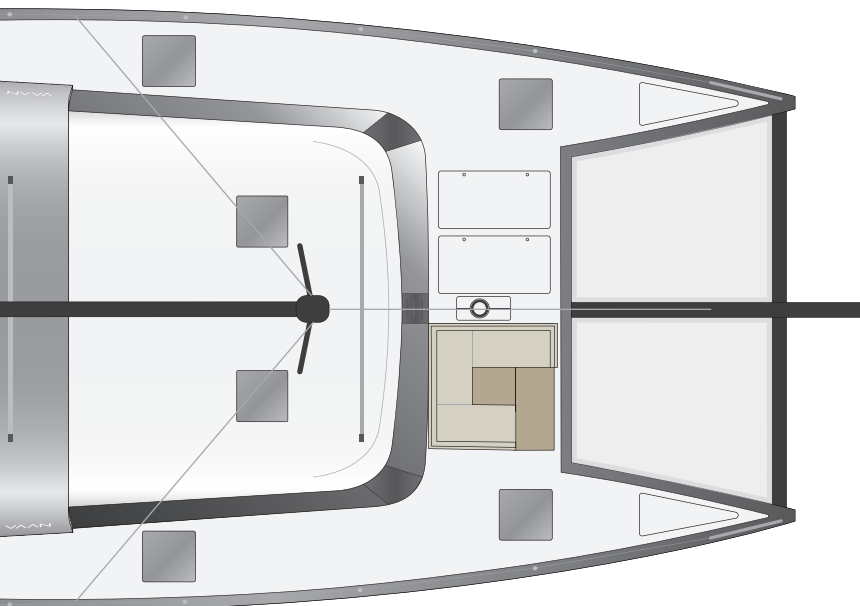


SEATS & RAILINGS

- *Rear benches provide seats & storage*
- *Extra removable rigid railings behind helm positions*
- *(re)movable swivel chair(s) behind helm positions (R5, R6)*



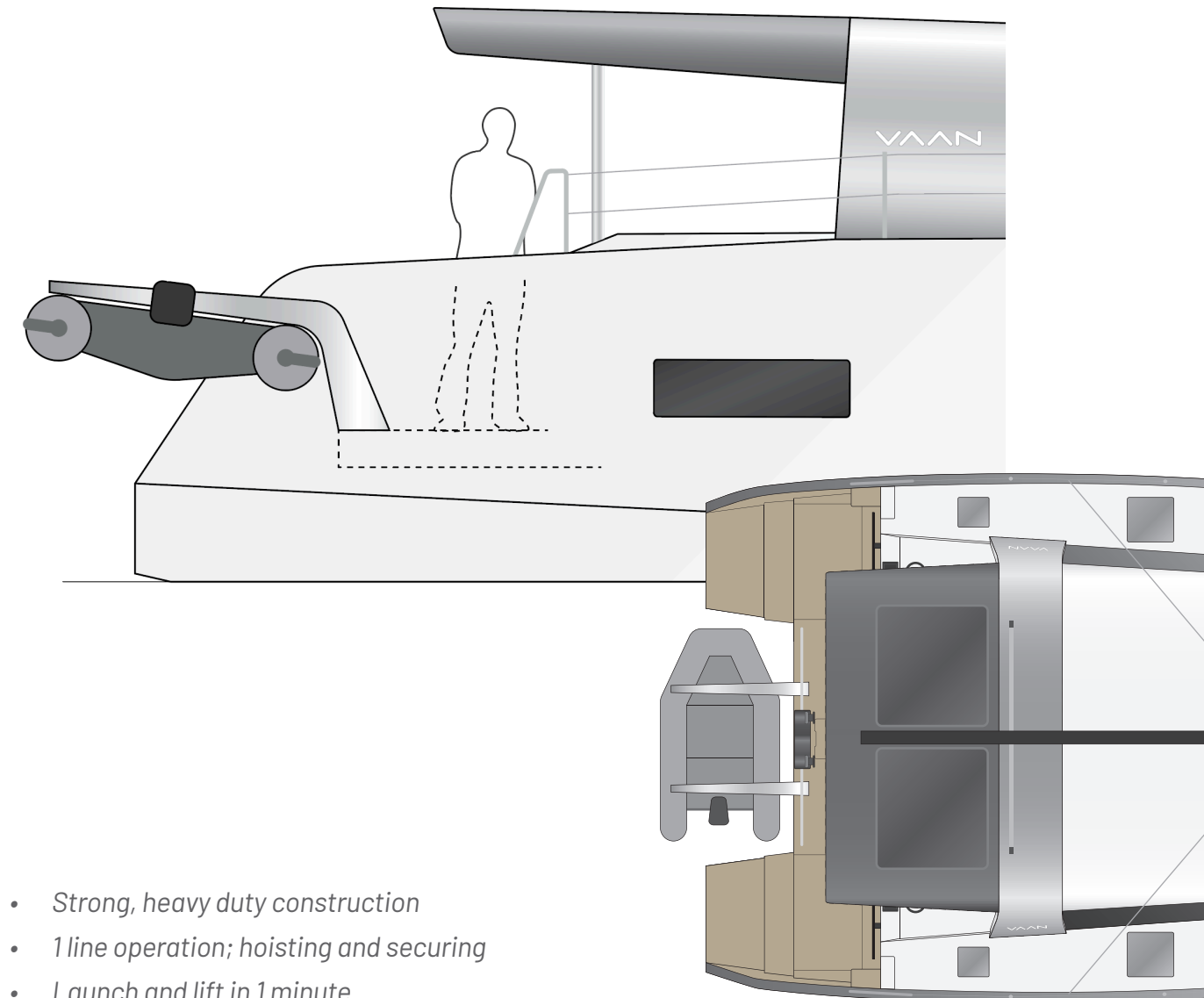
FORWARD SEATING



- R5 and up only
- Space for 4 sitting upright/dinner
- Table lowers for full lounge bed

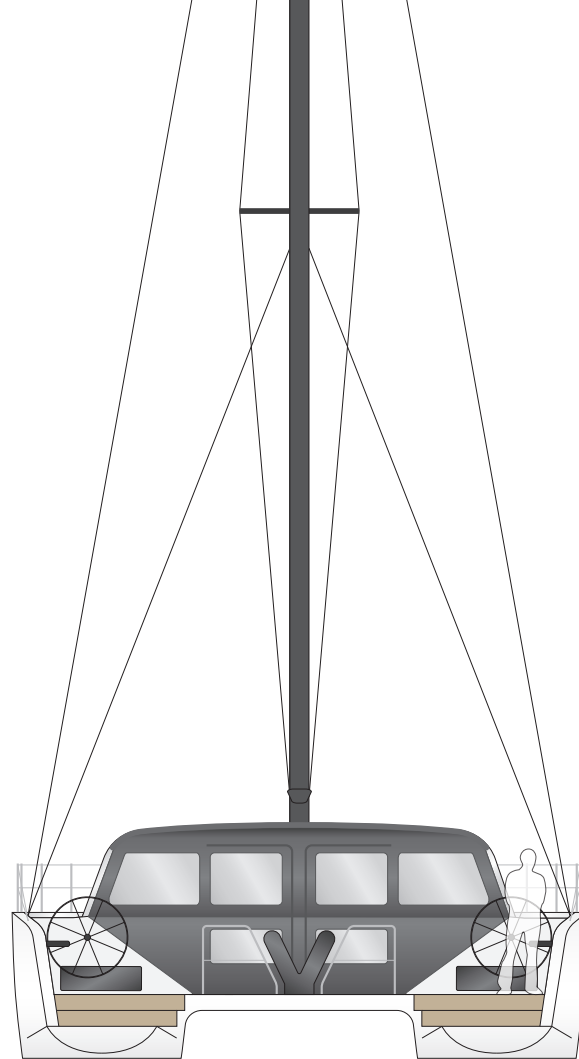
The plans, specifications, images and other details herein are only indicative and subject to change.

DAVITS

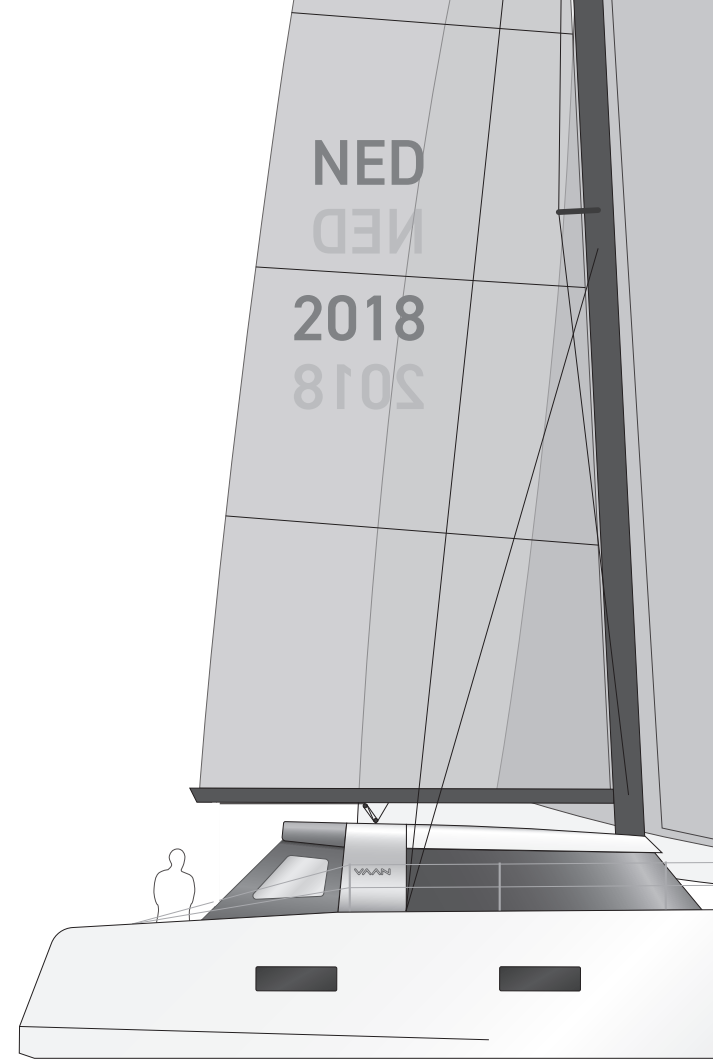


- Strong, heavy duty construction
- 1 line operation; hoisting and securing
- Launch and lift in 1 minute

COCKPIT TENT



- Creates enclosed 'outdoor' area
- Continue sailing with tent installed
- Extends sailing season
- Installed in minutes



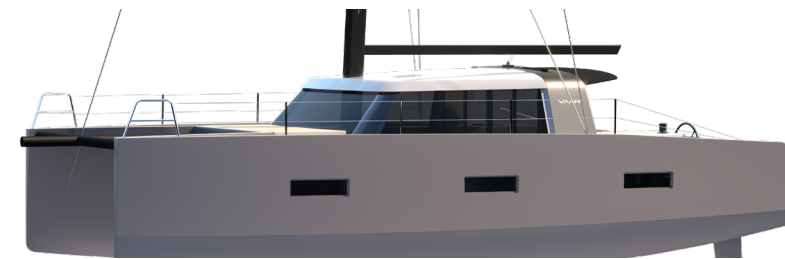
HULL COLORS



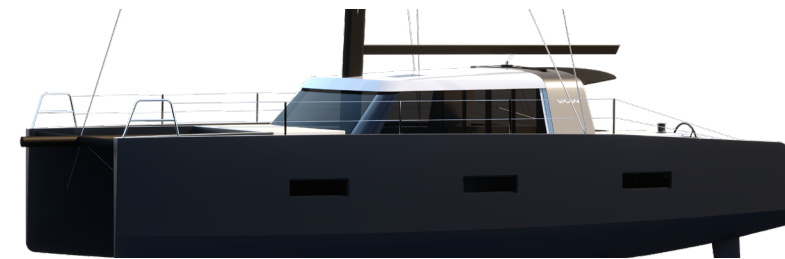
BARE ALUMINIUM
STANDARD



SNOW WHITE
OPTION



STONE GRAY
OPTION



LAVA BLACK
OPTION

"There is something magical about sailing. Being moved by nature, propelled by the wind, you can go, wherever you want to go, naturally.

Sailing also makes you humble. At the mercy of the sky and sea, you naturally become evermore respectful of the earth. And mindful of your place in it.

For us, sailing is the ultimate sustainable travel. And it's time for sailboats to live up to that.

Living a luxury life and protecting the earth can, and should, go hand in hand.

This is why we started Vaan. To build luxury yachts, that do not harm the planet. To restore the balance between pleasure and planet. To enable people to travel to pristine places, without causing negative impact. To protect the beauty of nature and enjoy it at the same time.

Sail the Planet!"

Nienke van 't Klooster & Igor Kluin





www.vaan.yachts | contact@vaan.yachts | +31 85 071 9999

Stationsplein 9 | 3224 AT | Hellevoetsluis | Holland

©2023 Vaan Yachts BV, Holland. All rights reserved.

All black & white photos by Maarten Corbijn (corbino.nl)

Disclaimer: This brochure is meant only for promotional purpose and has no legal value. The plans, specifications, images and other details herein are only indicative and subject to change. Vaan reserves the right to change any or all of these designs and specifications without prior notice or obligation. Artists' impressions are used to illustrate the design only. This printed material does not constitute an offer, obligation and/or contract of any type.

