



VISITOR GUIDE



SAIL THE PLANET

VAAN



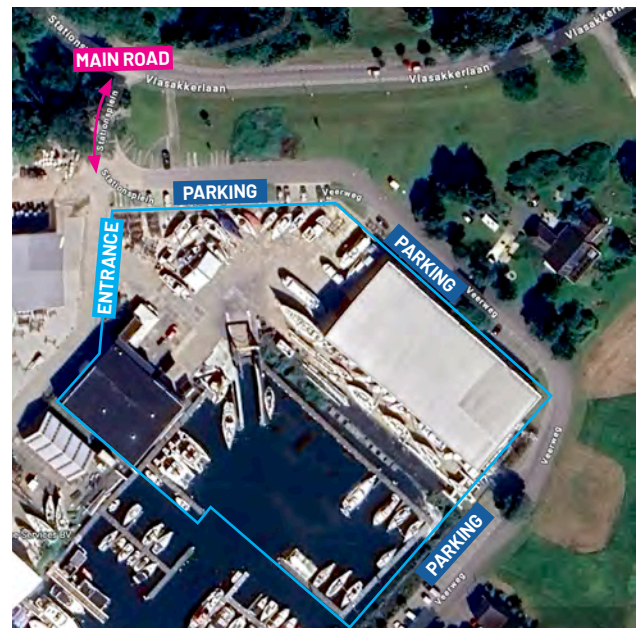


# WELCOME TO VAAN BASECAMP

Thank you for taking the time and making the effort to come and visit us, so we can give your project the time and attention it deserves.

In the following pages you will find some background information about Vaan Basecamp and our home town Hellevoetsluis, including some practical tips for your stay.

We hope you can combine visiting us with some sightseeing of our beautiful area. Please contact us if you need any more information.



## GENERAL CONTACT INFO

address : [Stationsplein 9, 3224AT Hellevoetsluis](#)  
e-mail : [contact@vaan.yachts](mailto:contact@vaan.yachts)  
phone : +31 (0)85 071 9999  
website : [www.vaan.yachts](http://www.vaan.yachts)

## EMERGENCY INFO

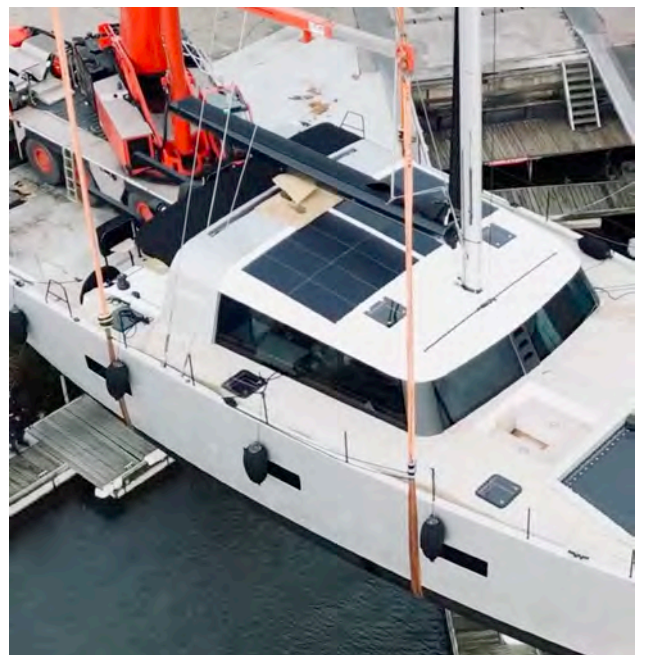
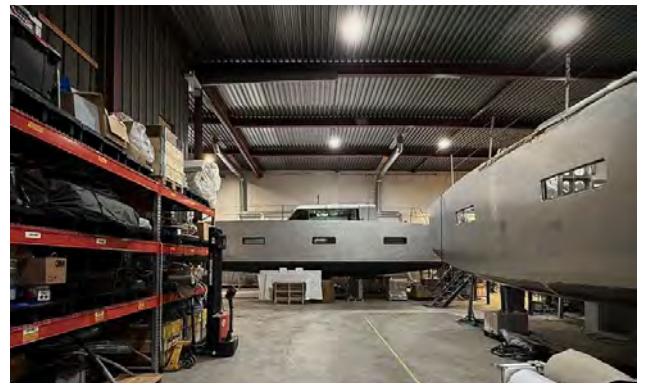
POLICE, FIRE, MEDICAL EMERGENCY: **CALL 112**  
Police, but not urgent: 0900-8844





# FACTORY TOUR

During your visit we will be happy to give you a tour of our factory and current boats in the outfitting stage and meet our team of specialists and craftsman.







Hellevoetsluis, hometown of Vaan, is located on the island of Voorne-Putten. Here, you'll find wide sandy beaches, unique nature reserves, historic ports and modern architecture. Voorne-Putten has also earned a permanent place in history with its fortified towns. Rotterdam, with one of the biggest ports in the world, is only forty minutes away.

Will you be spending a couple of days in our beautiful surroundings? Let us give you some tips for visiting!



## HISTORICAL HIGHLIGHTS

THE OLD FORTIFIED HARBOUR OF HELLEVOETSLUIS

*Parking at: Schoolplein, Hellevoetsluis*

**The location of the vast Haringvliet inlet has played an important role in the course of the history of Hellevoetsluis; earning it the name of a 'Fortification town on the Haringvliet'. The Vesting fortress with its harbours and fortifications is steeped in history. You can take a walk on the fortifications.**

The naval history of Hellevoetsluis goes way back to the 17th century. Did you know of the battle at Chatham? The Dutch fleet left for England from Hellevoetsluis. And later returned with their Flagship The Royal Charles.

<https://www.bbc.com/news/uk-england-kent-40175458>

During World War 2 Hellevoetsluis became part of the Atlantikwall. The Germans built this to protect themselves from an invasion by sea or by air. The Atlantic Wall (German: Atlantikwall) was an extensive system of coastal defences and fortifications built by Nazi Germany between 1942 and 1944 along the coast of continental Europe and Scandinavia as a defence against an anticipated allied invasion. In Hellevoetsluis you can still see where the anti-aircraft guns were posted (FLAK bedding).

<https://www.tracesofwar.nl/sights/127046/Flak-Bedding-Vesting-Hellevoetsluis.htm>



## FORTRESSE HOLLAND - DRY DOCK JAN BLANKEN

[Dokweg 5, Hellevoetsluis](#)

**Hellevoetsluis Dry Dock is a historic double dry dock in Hellevoetsluis. It was constructed between 1798 and 1822 under the direction of Jan Blanken. The dock is one of the rare surviving double dry docks. It is a national monument and is still in operation.**

For a long time, Hellevoetsluis was a naval base for the Admiralty of Rotterdam. When the admiralties were disbanded in 1795, Hellevoetsluis became a base of the Dutch Navy. By that time the fortified town was essentially a large wet dock, a harbor where the tide was kept out by a lock door. This was very beneficial for the preservation of ships. However, from about 1700, ships had become significantly larger. In the late eighteenth century, the Dutch had also been unable to ascertain a steady supply of good Scandinavian oak for ships. Both circumstances made that by 1795, the traditional method of maintaining warships by careening them, was no longer effective. What was needed was a dry dock, where warships could be cleaned regularly and easily without damaging them.

You can visit the dock, see the work on the ships that are docked at this time, and enter the tunnels at the lower level.

[www.fortresseholland.nl](http://www.fortresseholland.nl)



## MUSEUMSHIPS

[Koningskade 2, Hellevoetsluis](#)

**In the old harbour of Hellevoetsluis you'll find a couple of museumships you can visit.**

For example there is Zr. Ms. Buffel (HW 12, A 884), a Dutch ironclad built by the British shipyard Napier & Sons from Glasgow, Scotland (July 23, 1868). After having serviced a period as a lodging-and storage ship De Buffel now is a museum ship. Who steps on board, steps back in time for more than 145 years.

You can also visit AMS Bernisse. This ship served as a minesweeper on the Northsea for over 25 years. Together with the Dutch Royal Navy, it defused left sea mines and bombs from World War 2.



# NATURE

## QUACKJESWATER

Parking at: [Duinweg 23, Hellevoetsluis](#)

The Quackjeswater in Hellevoetsluis is a dune lake with untouched nature. Dating back to the 17th century, a moist forest has formed around the lake over time. You can take a walk around the lake here and you will find a lookout point on your way. This vantage point is a perfect place to see spoonbills breeding. On the islands in this dune lake you can see them sitting on and around their nests in the right season. Various species of songbirds can be heard and seen in the surrounding bushes.



## DUNES OF VOORNE

Parking at: [Duinstraat 16a, Rockanje](#)

The dunes of Voorne are a very varied nature reserve in Rockanje. You'll find forest, moist dune valleys, thickets and dry sandy slopes here. In contrast to the dune areas in the north of the Netherlands, where the dunes are several thousand years old, we are dealing with relatively young dunes on Voorne. The oldest are about 800 years old, but new dunes are still being formed on the beach.

Thanks to this young age, the dune sand is rich in lime. The vegetation has adapted to this and offers an enormous variety of species. In the dune area you can encounter large grazing animals, Exmoor ponies and Galloway cattle. These help to keep the dune terrain open.



## ESTATE MILDENBURG

Parking at: [Hoflaan 11, Oostvoorne](#)

Walking along the long straight main avenue, you can imagine that this once was a Baroque estate. Now you will mainly find a park here with a wide variety of flowers, plants and trees. There are also deer, bats, mushrooms and more. This so-called Milderburg forest is worth a visit all seasons of the year.





# DUTCH WATERWORKS

**The Delta Works (Dutch: Deltawerken) is a series of construction projects in the southwest of the Netherlands to protect a large area of land from the sea. Constructed between 1954 and 1997, the works consist of dams, sluices, locks, dykes, levees, and storm surge barriers located in the provinces of South Holland and Zeeland. This unique structure was built to prevent floods like the 1953 North Sea Flood, which the Dutch call the Watersnoodramp.**

The aim of the dams, sluices, and storm surge barriers was to shorten the Dutch coastline, thus reducing the number of dikes that had to be raised. Along with the Zuiderzee Works, the Delta Works have been declared one of the Seven Wonders of the Modern World by the American Society of Civil Engineers.

<https://www.holland.com/global/tourism/destinations/provinces/zeeland/delta-works.htm>

## OOSTERSCHELDE BARRIER (60 MINS DRIVE)

Faelweg 5, Vrouwenpolder

[www.zeeland.com/en/visit/603\\_en/oosterscheldekering](http://www.zeeland.com/en/visit/603_en/oosterscheldekering)

With its 3 kilometers, the Oosterschelde barrier is the longest component. Nearby you will find Deltapark Neeltje Jans and the Oosterschelde nature reserve, where you can learn more about nature on and beneath the water. You can take a look inside the storm surge barrier and experience the sheer force of water during a guided tour.

## MAESLANT BARRIER (60 MINS DRIVE)

Maeslantkeringweg 139, Hoek van Holland

[www.keringhuis.nl/english](http://www.keringhuis.nl/english)

No other water barrier in the world has bigger adjustable arms than the Measlant barrier. This part of the Deltaworks can withstand a tidalwave of 5 meters above sea level. De Maeslant barrier is located in the Nieuwe Waterweg at Hook of Holland was built between 1991 en 1997. De Maeslant barrier is designed to form the first line of protection for the inhabitants of South-Holland from hightides at sea.





# ARTS AND CULTURE

## BOIJMANS VAN BEUNINGEN (40 MINS DRIVE)

Museumpark 18-20, Rotterdam

[www.boijmans.nl/en](http://www.boijmans.nl/en)

In 2019, the main building of Museum Boijmans Van Beuningen closed its doors for comprehensive maintenance and renovation work. While this building will be closed to the public for a period of seven years, part of the museum's art collection will be on display in other museums during that time under the title 'Boijmans bij de Buren'. You can also visit the brand new Depot Boijmans, the world's first art depot that is accessible to the public. A unique building with a unique experience!



## KUNSTHAL (40 MINS DRIVE)

Westzeedijk 341, Rotterdam

[www.kunsthall.nl/en](http://www.kunsthall.nl/en)

The Kunsthal is one of Rotterdam's cultural treasures. The museum is inspiring in its architectural design, as well as in the host of exhibitions it continually puts on. Its building, by renowned architect Rem Koolhaas, makes use of unexpected design features that offers surprises around every corner.

## RIJKSMUSEUM (60 MINS DRIVE)

Museumstraat 1, Amsterdam

[www.rijksmuseum.nl/en](http://www.rijksmuseum.nl/en)

The Rijksmuseum is the principal national museum in Holland. It illustrates the art and history of Holland from the Middle Ages to the present. World-famous highlights from the Dutch Golden Age, including Rembrandt van Rijn's Night Watch and Johannes Vermeer's The Milkmaid, can be admired at the Rijksmuseum.



## VAN GOGH MUSEUM (60 MINS DRIVE)

Museumplein 6, Amsterdam

[www.vangoghmuseum.nl/en](http://www.vangoghmuseum.nl/en)

Vincent van Gogh was a nineteenth-century Dutch Post-Impressionist painter. His work had a huge impact on twentieth-century art. He was little appreciated in his lifetime, selling just one single work. Today, the Van Gogh Museum draws some 2 million visitors each year.

## MAURITSHUIS - THE HAGUE (40 MINS DRIVE)

Plein 29, The Hague

[www.mauritshuis.nl/en/](http://www.mauritshuis.nl/en/)

The Hague's Mauritshuis is home to the best of Dutch painting from the age of Rembrandt. Via their various online offerings, you are offered a window into the art and history of the Dutch Golden Age. Masterpieces include The Anatomy Lesson of Dr. Nicolaes Tulp by Rembrandt, The Goldfinch by Carel Fabritius and Vermeer's Girl with a Pearl Earring. The Mauritshuis has also teamed up with Google Arts & Culture to initiate Meet Vermeer, the most complete platform about Johannes Vermeer's life and paintings.



# CITIES TO VISIT

## ROTTERDAM (40 MINS DRIVE)

[en.rotterdam.info](https://en.rotterdam.info)

Rotterdam is a city of many faces: a tough port city, a trendy nightlife city, a sophisticated shopping city, and a hip artistic city. Above all, Rotterdam is the architecture city of Holland that stimulates innovation. Its skyline is always changing. There are many things to do amid Rotterdam's skyscrapers. You can go on a shopping spree, enjoy some excellent food, and visit a range of museums and attractions in and around the city centre.



## AMSTERDAM (60 MINS DRIVE)

[www.iamsterdam.com/en](https://www.iamsterdam.com/en)

*Visit the world-famous 17th century capital of Holland. Enjoy the historic buildings, beautiful museums and pleasant ambiance. Go for a boat tour on the canals, stroll through Vondelpark, and go shopping in the inner city. Amsterdam is a unique city!*



## DORDRECHT (40 MINS DRIVE)

[www.indordrecht.nl/en/](https://www.indordrecht.nl/en/)

It was in Dordrecht in 1572, in Het Hof van Nederland, where representatives from the seven provinces of the Low Countries met and united under the leadership of William of Orange, reigniting a revolt against the king of Spain. This First Assembly of the Free States laid the foundations for the birth of the Netherlands as we know it today, inspiring Dutch independence, and, alongside it, driving prosperity through trade, innovation and immigration. Today, the center of Dordrecht is still home to more than 1,000 historic monuments, and there's a wealth of fascinating museums, galleries, restaurants and shops to discover.



## DELFT (40 MINS DRIVE)

[www.delft.com](https://www.delft.com)

Delft enjoys a worldwide reputation due to its connection with Johannes Vermeer, Delft Blue earthenware and the Royal House. Relive its glorious past as you wander along canals, churches, mansions and courtyards. This university town also offers canal tours, museums, markets and many pubs.





### BRIELLE (10 MINS DRIVE)

<https://www.opvoorneputten.de/brielle>

Brielle is a historic fortress town like Hellevoetsluis. It played a rather important role in the 80 year war with the Spanish army. The town offers a great mix of historic sites, buildings and museums together with very nice restaurants. Should you be in the area around April 1st, then visit Brielle for the annual celebration of the recapturing of the town in 1572.



### THE BEACHES OF ROCKANJE (15 MINS DRIVE)

<https://www.opvoorneputten.de/locaties/677504040/badstrand-rockanje-eerste-slag>

The beaches of Rockanje are one of the most popular in the Netherlands. Great for the whole family as they are very wide and safe, great for a long beachwalk and great for lunch or dinner at one of the many beach restaurants.





# HOTELS

## **BOUTIQUE HOTEL 'DE OUDE VESTE' (10 MINS WALK)**

Oostzanddijk 3a, Hellevoetsluis, 31(0)181 551 718

<https://deoudeveste.nl/>

A tasteful boutique hotel in the heart of the walled 'Vesting' of Hellevoetsluis. Plenty of restaurants only a short walk away, or restaurant 'De Buren' in the same building. The building is an old marine school dating back to 1877. It features a nice terrace overhanging the Vesting Marina.



## **BEACH HOTEL CAPE HELIUS (10 MINS WALK)**

Nieuwe Zeedijk 1, Hellevoetsluis, +31(0)88 0444 999

<https://www.beachhotelcapehelius.nl>

Nice hotel overlooking the Haringvliet lake. It is within walking distance of the walled area of Hellevoetsluis and the Vaan locations. It has a restaurant, outdoor seating and small beach area.



## **BED & BREAKFAST 'DE JONGENS' (15 MINS DRIVE)**

Dorpsweg 10, Rockanje, +31(0)181 853 544

<https://dejongensrockanje.nl/en/>

Bed & Breakfast 'De Jongens' in Rockanje offers beautiful and luxurious rooms with a premium box spring mattress, there is also a restaurant where the chefs will prepare a wide range of delicious dishes for your enjoyment.



## **OTHER OPTIONS**

Should these options not be available or would you like to explore more, just search for 'Hellevoetsluis' on sites like [www.booking.com](http://www.booking.com) or [www.tripadvisor.com](http://www.tripadvisor.com).

# RESTAURANTS

These are some suggestions for restaurants within the walled town, so within walking distance. All have indoor and outdoor seating:

- [Heeren aan de Vesting](#) (lunch & dinner, great view)
- [De Buren](#) (steak, grill, bbq)
- [De Waag](#) (lunchroom)
- [Fortessa](#) (Italian)
- [Limani](#) (Greek)
- [Thuisbezorgd.nl](#) (delivery)

For more suggestions in the area please check [www.thefork.nl](http://www.thefork.nl) or [www.yelp.com](http://www.yelp.com).





THE RIGHT TIME IS NOW

VAAAN®